

# Radio frequency controller

## RGB LED circular controller



### Features:

This product has a unique appearance and a round remote controller with excellent hand feeling.

Ø built-in stable touch solution, excellent and stable touch effect.

Ø Advanced PWM (pulse width modulation) control technology is adopted, and the change effect is exquisite.

Ø With unique remote control and exquisite controller, the overall visual effect of the product is perfect.

Ø RGB output has a maximum power of 432W and is widely used.

Ø Choose 22 classic modes as you wish.

This product can adapt to various constant voltage RGB lamps, such as RGB hard light bar, soft light bar, RGB panel lamp, RGB module, etc.

### Application:

Interior Decoration: clubs, bars, corridors, rooms, hotels, clubs, museums, etc.

Outdoor decoration: squares, commercial buildings, parks, scenic spots, night scenes, etc.

## Specifications:

-20°C~60°C Input power: DC12V ~ 24V

Output power: Max 18A

Remote standby power consumption: 0.03MW

Power consumption for remote control operation: 5MW

Product operating temperature:-20°C ~ 60°C

## Remote control button operation instructions:



### Key description:

1. Mode switch key
2. Color temperature thickening/speed + key
3. Color temperature reduction/speed-key
4. Switch
5. Color ring color zone
6. Brightness increase key
7. Brightness reduction key

## Function description of controller components:



### Note:

A:12~24V input terminal, standard DC and conventional wire positive and negative input interface.

B:RGBV + output terminal, 3 channels 6A output total 18A

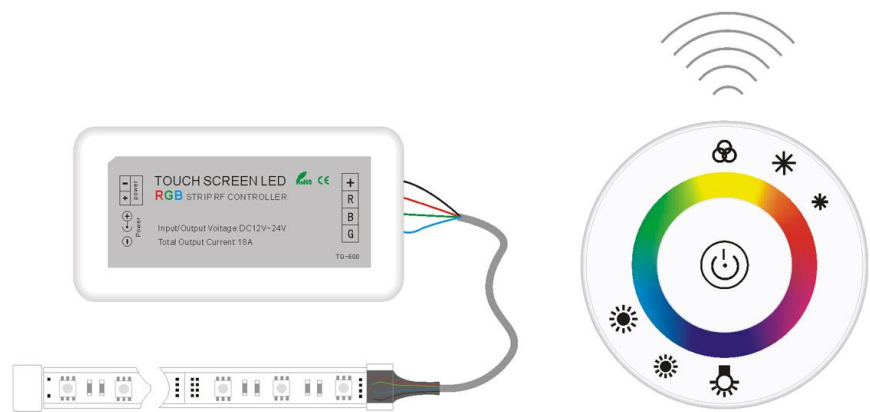
A: When choosing to touch the color ring to get the color, users can use the color temperature and brightness adjustment to meet the precise requirements.

B: White Light shortcut key. You can use white light to quickly switch white light.

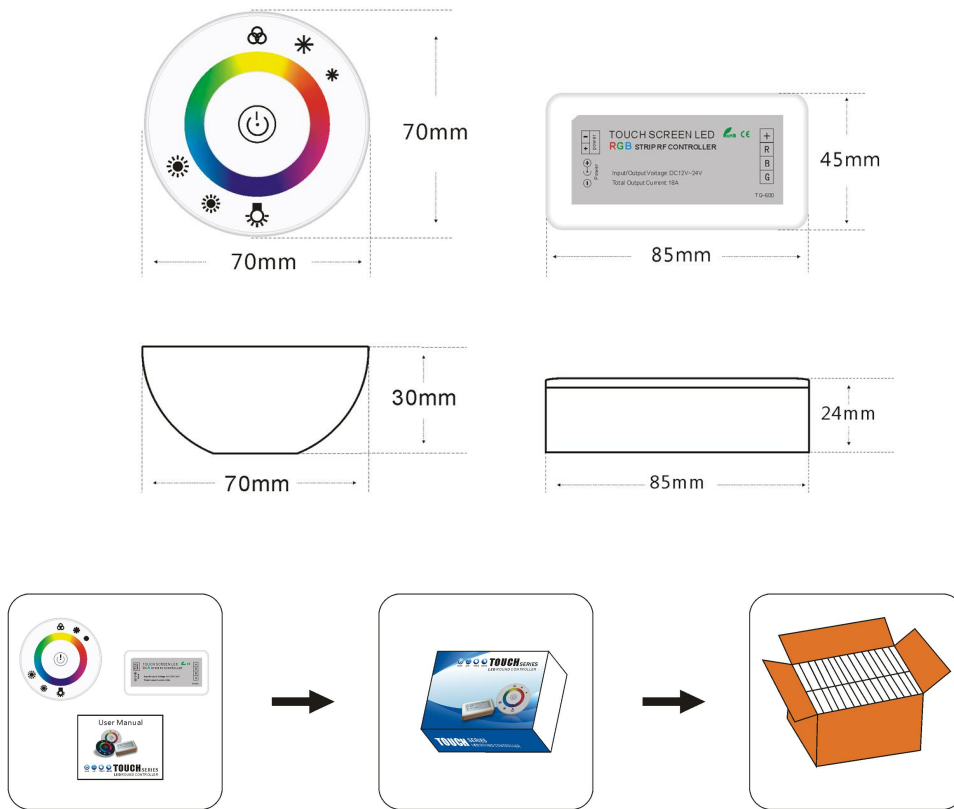
Mode menu:

Fixed mode list:			Fixed mode list:		
No.	Mode name	Remarks	No.	Mode name	Remarks
1	Static red	Adjustable brightness	12	Dynamic Red	Adjustable brightness and adjustable speed
2	Static Green		13	Dynamic Green	
3	Static Blue		14	Dynamic Blue	
4	Static Orange		15	Dynamic Orange	
5	Static purple		16	Dynamic purple	
6	Static cyan		17	Dynamic cyan	
7	Static White		18	Dynamic White	
8	Three-color jump	Adjustable	19	Red and Blue jump	
9	Seven-color jump	brightness and adjustable speed	20	Red and green jump	
10	Three-color gradient		21	Green and Blue jump	
11	Seven-color gradient		22	Full color gradient	

Application connection description:



## Product specifications:



## Installation Precautions:

1. Please debug and install this product by personnel with professional qualifications.
2. This product cannot be waterproof and needs to avoid sun and rain. If installed outdoors, please use a waterproof tank.
3. Good heat dissipation conditions will prolong the service life of LED controller. Please install the product in a well-ventilated environment.
4. Please do not install and use such products in lightning, thunder, strong magnetic field or high voltage.
5. Please check whether the output voltage of the LED power supply used meets the requirements of the product voltage range.
6. The diameter of the used wire must be sufficient to load the LED lamps connected, and ensure that the wiring is firm to avoid accidents caused by overheating of the wire or poor contact.
7. Before power-on and debugging, ensure that all wiring is correct to avoid lamp damage caused by wiring errors.

## After-sales service:

### 1. Our LED controller products provide lifelong technical support and warranty services:

- Free warranty: Our company will provide free repair or replacement service if there is any quality problem within one year from the date of purchase.
- paid warranty: for products beyond the free warranty period, a certain cost of maintenance materials will be charged.

### 2. The following conditions are not covered by free warranty or replacement services:

Excessive damage caused by human beings such as high voltage, overload, improper operation, etc.

Any wiring errors, water immersion (non-waterproof products) and unauthorized maintenance.

Any serious damage or deformation of the shape caused by transportation or knocking.

The appearance of the product is seriously damaged or deformed.

Damage caused by natural disasters and force majeure, such as earthquakes, floods, fires, etc.

### 3. Our company's greatest responsibility for ex-factory products is to replace products of the same model and quantity.

### 4. In order to speed up the time limit of maintenance or replacement, please indicate the failure phenomenon, use

environment and operation when the failure occurs, so as to ensure that the maintenance situation can be handled

quickly.