

# Manual Instruction

## TY-Colorful-X7 ZIGBEE LED Music Controller

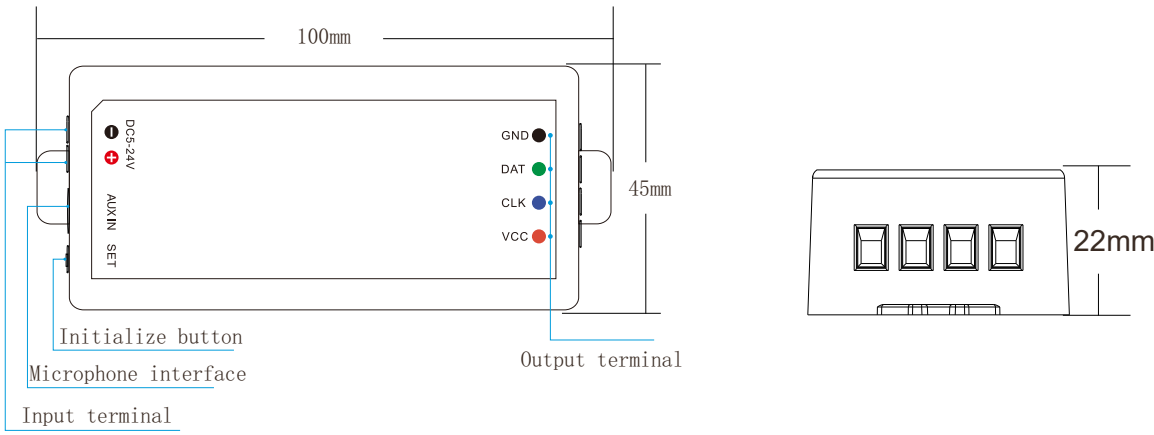
### 1.Product feature

- Doodle APP supports remote and smart speaker control.
- Support OTA online upgrade (if there is a new IC update iteration, our product will also update iteration) the more use the betterTT
- Built-in massive mode: 180 kinds of dynamic, 22 kinds of music, light screen 30 kinds of non-musical pattern effects.
- Support control light screen, light belt IC1024 points, support simple layout operation.
- Supports multiple IC chips,RGB channel sequence is adjustable.  
(IC support is optional within the App)
- Support lamp color switch: built-in lamp color switch function.
- DC5~24V voltage input, the power supply has anti-reverse connection function.
- It has the function of saving setting parameters after power failure.

### 2.Technical parameter

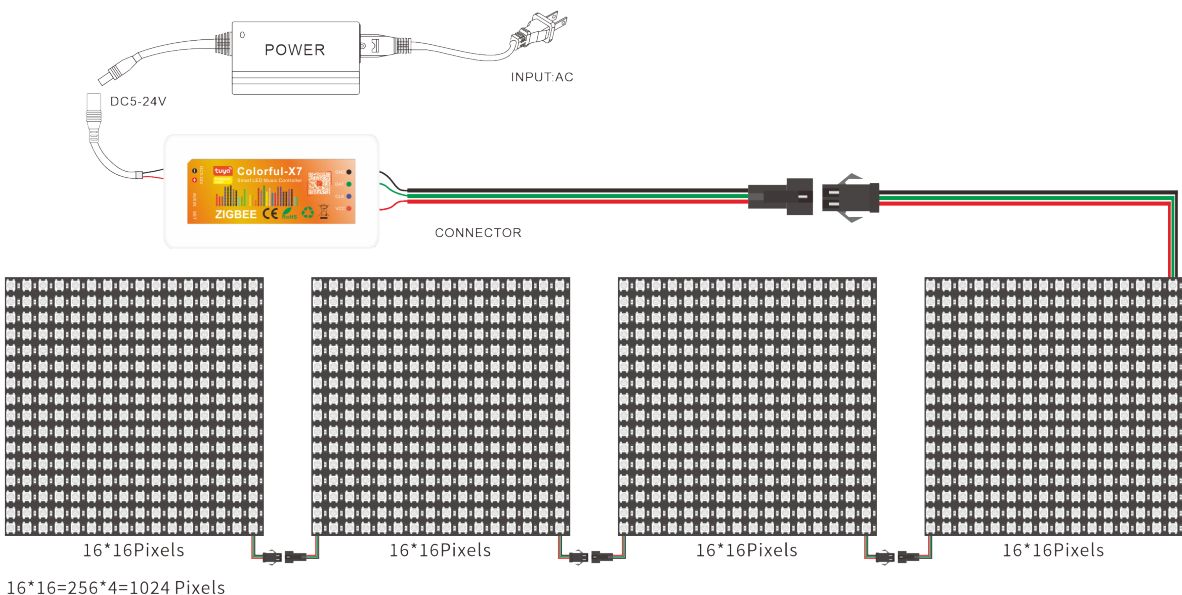
Operating volt-	DC5~24V		
Pixel Qty Supported	1024		
Output	SP1 Signal		
Operating Current	18mA-45mA		
Operating Temperature	-20° C-60° C		
Lighting Modes Qty	22 of	180 of Dymanic	30 of PixelScreen Types
Audio Input 2	Aux Cable	Build-in Mic	

### 3.Product structure and size

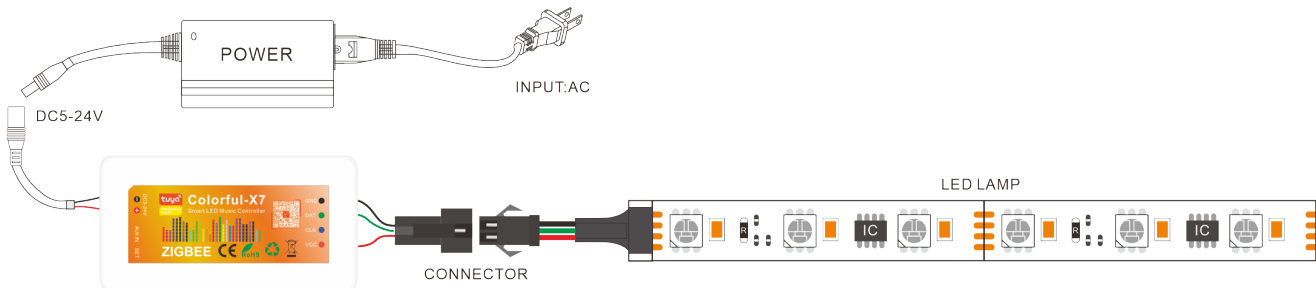


### 4.Wiring diagram

(1)Light panel wiring diagram



(2)Light tape wiring diagram



### 5.Application download



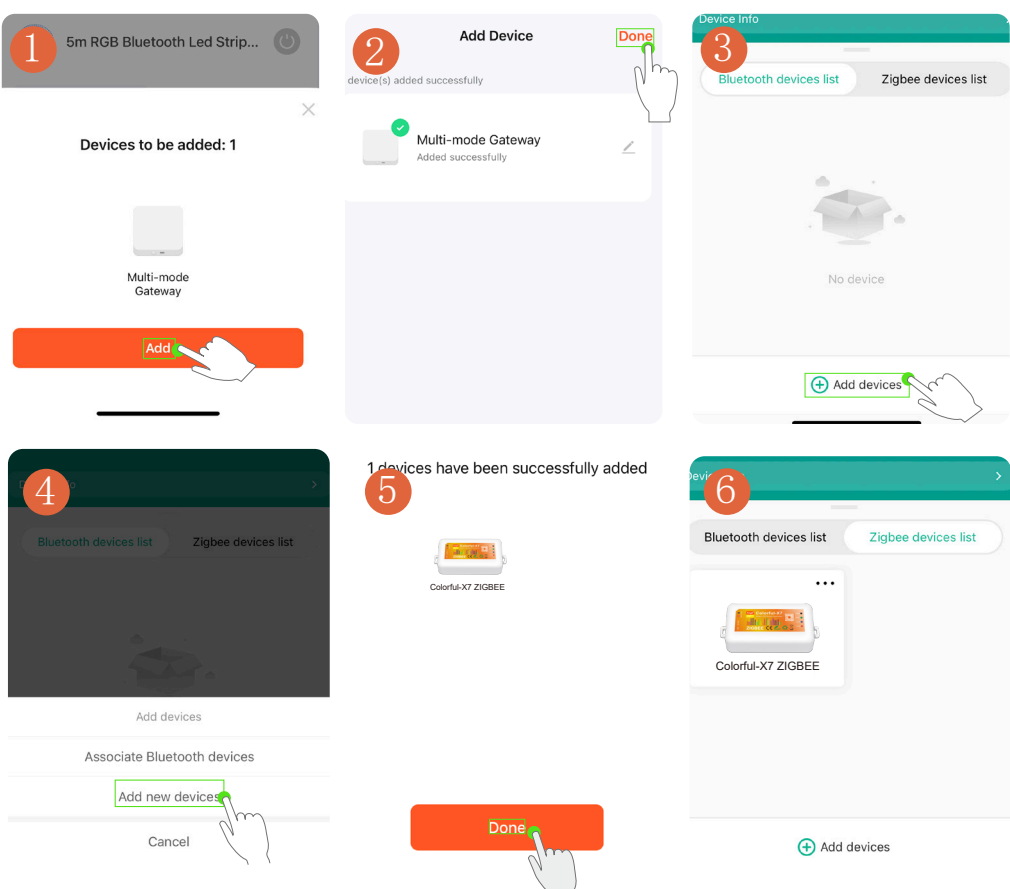
Scan the QR code  
Or search for "tuya smart" in the app  
New users need to register to log in to the

### 6.User guide

- (1).Wires Connection  
Connect the Controller with Metrix-LED or LED-Strip  
Connect the Power supply accordingly to Controller or LED
- (2).Login the APP of "Tuya Smart"
- (3).initialize the Controller by (If is new, the Controller is in initial Mode defaultly)  
5 seconds de-press the button on the Controller. Like image #1
- (4). In the initial mode, make sure the controller is connected to a power source, ensuring the internet status of the smartphone. After entering the Tuya APP,The phone automatically recognizes our gateway.
- (5).Enter the WIFI password to connect (an incorrect WIFI password will cause the connection to fail, and a non-2.4G WiFi will also cause the connection to fail)
- (6).Click Done to enter the gateway control interface
- (7).Tap Add Device to add a controller (please place the gateway, controller, and smartphone close to each other for quick pairing identification)
- (8).After the smart device is recognized, click Done to enter the next interface, and click the light to enter the control page operation
- (9).After the controller is installed in the APP, we can easily control the LED lighting with the APP.



image #1



Attention:

Please turn off power to ensure safety while installing the device.Do not place the product nearby highly flammable or explosive materials.Please check whether the input voltage is in accordance with the device.Please do not use the device in the place with widely range metal area or strong electromagnetic wave nearby,otherwise the remote distance will be seriously affected.