

Product specification



Model: AP-M302

Name: Panel Dual Controller

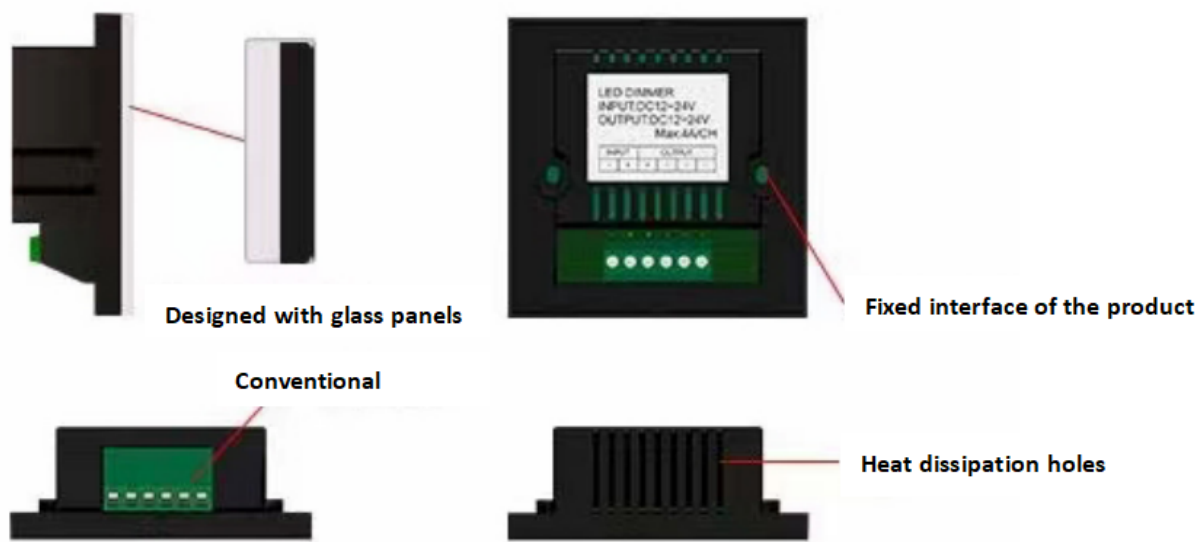
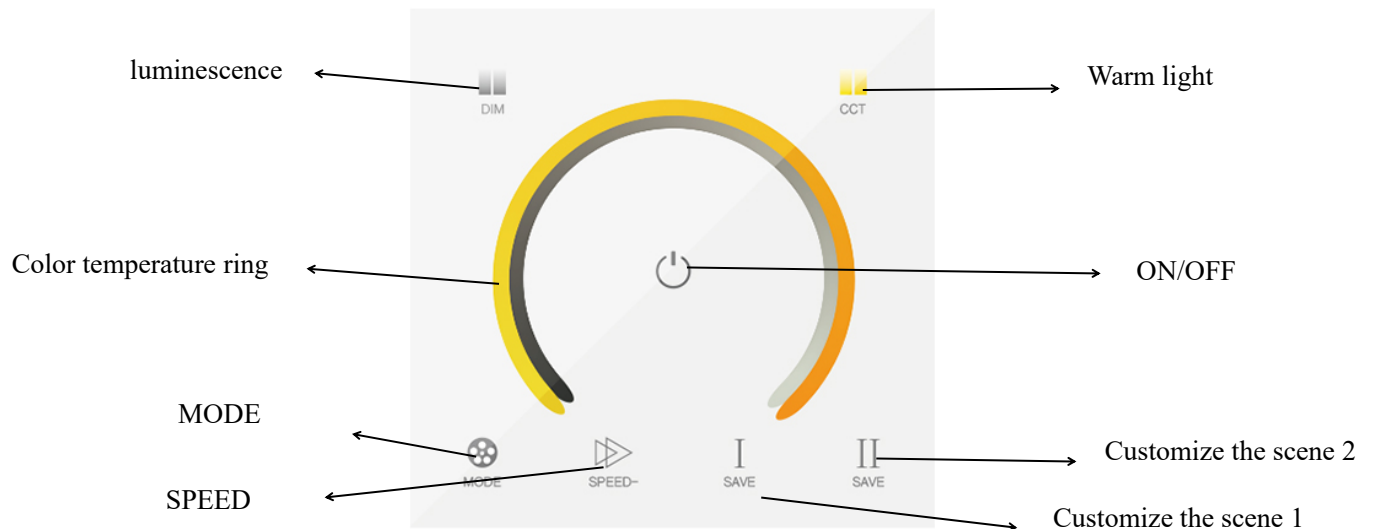
● overview

This product is a new generation of intelligent color temperature dimming controller developed by our company using the latest capacitive touch technology and wireless technology. Adopt color ring selection and full touch panel method, humanized design, beautiful and generous, direct and convenient; Using stable wireless and capacitive touch mode, you only need to touch the corresponding button with your finger to realize long-distance directionless control of the light strip.

● peculiarity

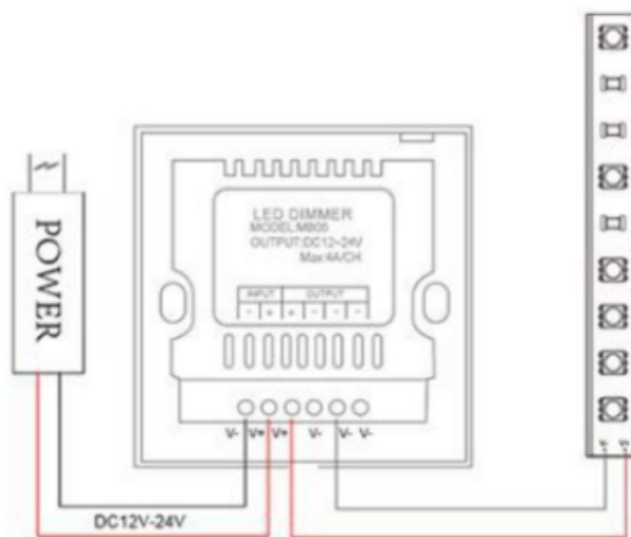
1. All touch mode, no mechanical wear, can overcome the life problem caused by physical buttons.
2. Adopt an intuitive pulley color selection method, which is intuitive and convenient.
3. The input voltage is self-adapting to DC12~24V, and has the function of input polarity protection.
4. Using advanced PWM (pulse width modulation) control technology, the change effect is delicate and flicker-free.
5. The appearance is novel, beautiful and generous, especially suitable for indoor home and commercial occasions.

● Description of the panel and the applicators

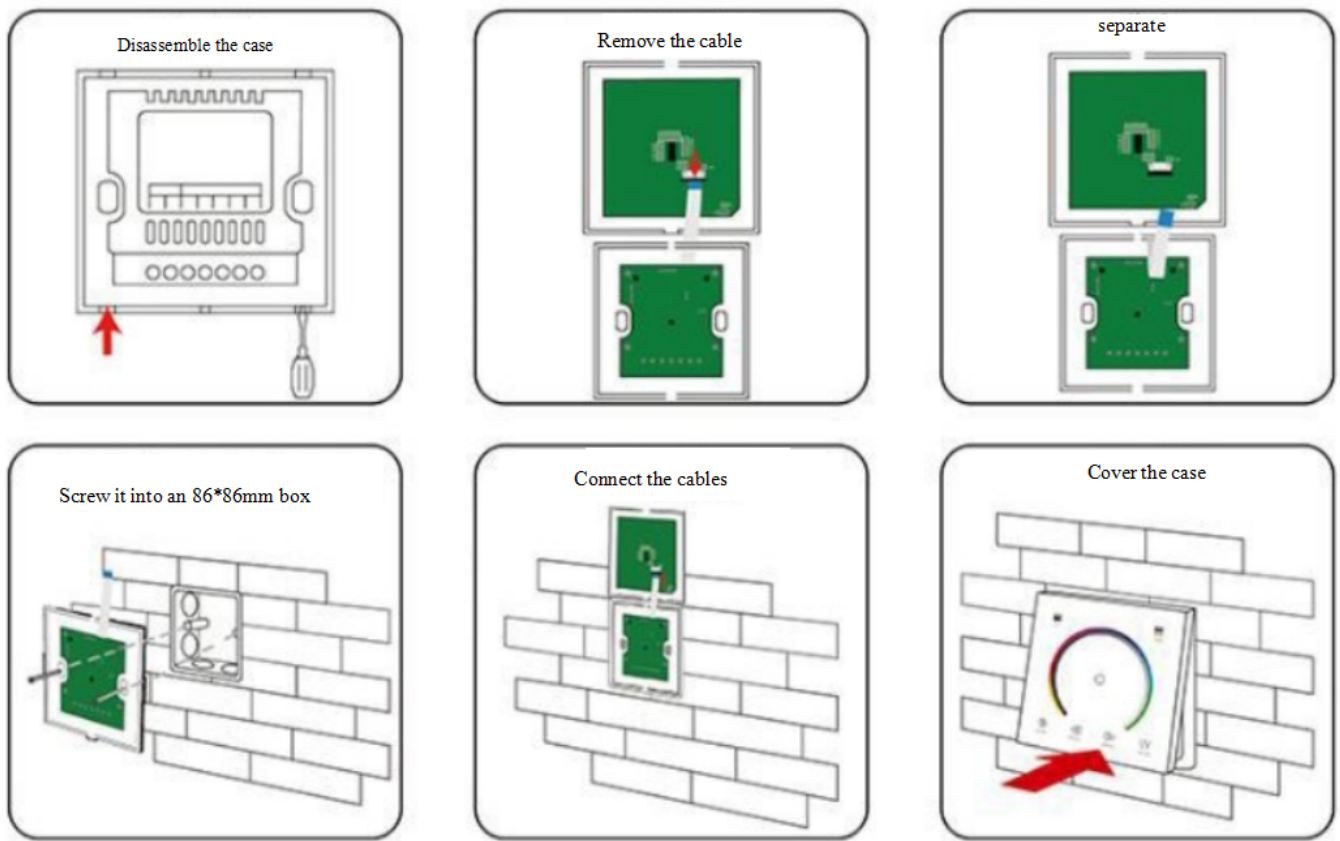


● Wiring and typical application diagrams

Take connecting RGB strip lights as an example:



● Installation diagram



● 产品包装



Controller size	Color box size	1PCS	Carton size	50PCS
L86*W86*H40mm	L120*W83*H55mm	220g	L515×W320×H320mm	10.8kg

● Installation precautions

1. This product should be debugged and installed by professionally qualified personnel.
2. This product cannot be waterproof, it is necessary to avoid sun and rain, if it is installed outdoors, please use a waterproof box.
3. Good heat dissipation conditions will prolong the service life of the LED controller,

please install the product in a well-ventilated environment.

4. Please do not install and use such products in lightning and thunder, strong magnetic field or high voltage occasions.

5. Please check whether the output voltage of the LED power supply used meets the requirements of the product voltage range.

6. The diameter of the wire used must be enough to load the LED lamp connected, and ensure that the wiring is firm, so as to avoid the wire overheating or poor contact triggering accidents.

7. Before power-on and commissioning, make sure that all wiring is correct to avoid damage to the lamps due to wiring errors.

● After-sales service

1. Our LED controller products provide lifelong technical support and warranty services:

Free warranty: This product has quality problems within one year from the date of purchase, and our company will give free repair or replacement service.

Paid warranty: Products that exceed the free warranty period will be charged a certain cost of maintenance materials.

2. The following situations are not covered by the free warranty or replacement service:

Man-made damage such as overvoltage, overload, improper operation, etc.

Any wiring errors, flooding (non-waterproof products) and unauthorized repairs.

Any serious damage or serious deformation of the shape due to transportation, knocking, etc.

The shape of the product is severely damaged or deformed.

Damage caused by natural disasters and force majeure causes, such as earthquakes, floods, fires, etc.

3. The company's maximum responsibility for the factory products is to replace the same model and quantity of products.

4. In order to speed up the timeliness of repair or replacement, please indicate the fault phenomenon, the use environment, and the operation done when the fault occurs, so as to ensure that the maintenance situation is dealt with quickly.