



# R-105+C-105Z

## RGB CCT LED MESH+ZIGBEE 3.0 Controller Set

CE RoHS



TUYA APP



R-105

MESH+ZIGBEE



C-105Z

**Compatible voice assistants** (Support language command switch and brightness adjustment.)



小米小爱



小智管家



天猫精灵



百度小度



Amazon Alexa



Yandex Alice



Google Assistant

Local Remote Control:

MESH remote control realizes local physical key control (such as switching, group switching, basic dimming) through MESH, which is suitable for the elderly, children or quick operation.

MSHE ZIGBEE 3.0 controller, through the ZIGBEE gateway + Wi-Fi + Tuya ecology supports remote APP control, which can finely adjust brightness, color temperature and dynamic effects, and can share devices, create groups and other functions.

### peculiarity

- MESH wireless transmission technology, stable signal and strong penetration.
- MUST BE USED WITH ZIGBEE GATEWAY.
- Support matching multiple devices, multiple devices can be controlled at the same time, and one remote control can manage and synchronize up to 500 controllers. Each controller can be supported by 10 remote controls. (Control distance 30 meters)
- The brightness 、 Temperature 、 color of the remote control can be adjusted according to personal preference, and the color and speed of the dynamic mode can be edited.
- The controller can adjust the brightness, color temperature, voice control, select various dynamic or custom scenario modes, timing, countdown and other functions through the Tuya/Smart Life APP.
- Device click to run and automate, automatic transfer and synchronization function.
- PWM (Pulse Width Modulation) technology is adopted to ensure smooth light transition and avoid eye fatigue.
- Voice control, support Asia Alexa, Google Assistant, Tmall Genie, Xiaomi Xiaoai voice assistant and other speakers.
- Support multi-controller cascade, easily cover large-area lighting scenes such as shopping malls, theaters, building facades, etc.

### Device parameters

#### LED controllers

Input voltage	DC 5-24V
Input current	6/CH; 15A max
Access signal	MESH+ZIGBEE
Control the distance	30M
Size	L75XW36XH17mm
Authentication	CE,ROHS

#### Environment

Operating temperature	Ta: -20°C ~ +60°C
Maximum temperature of the case	Tc: +65°C
IP rating	IP20

#### Wrap

Package size	L7.6XW3.7XH2.1cm/0.04kg
Box size (100 pcs)	L19XW16XH12cm/4.2kg

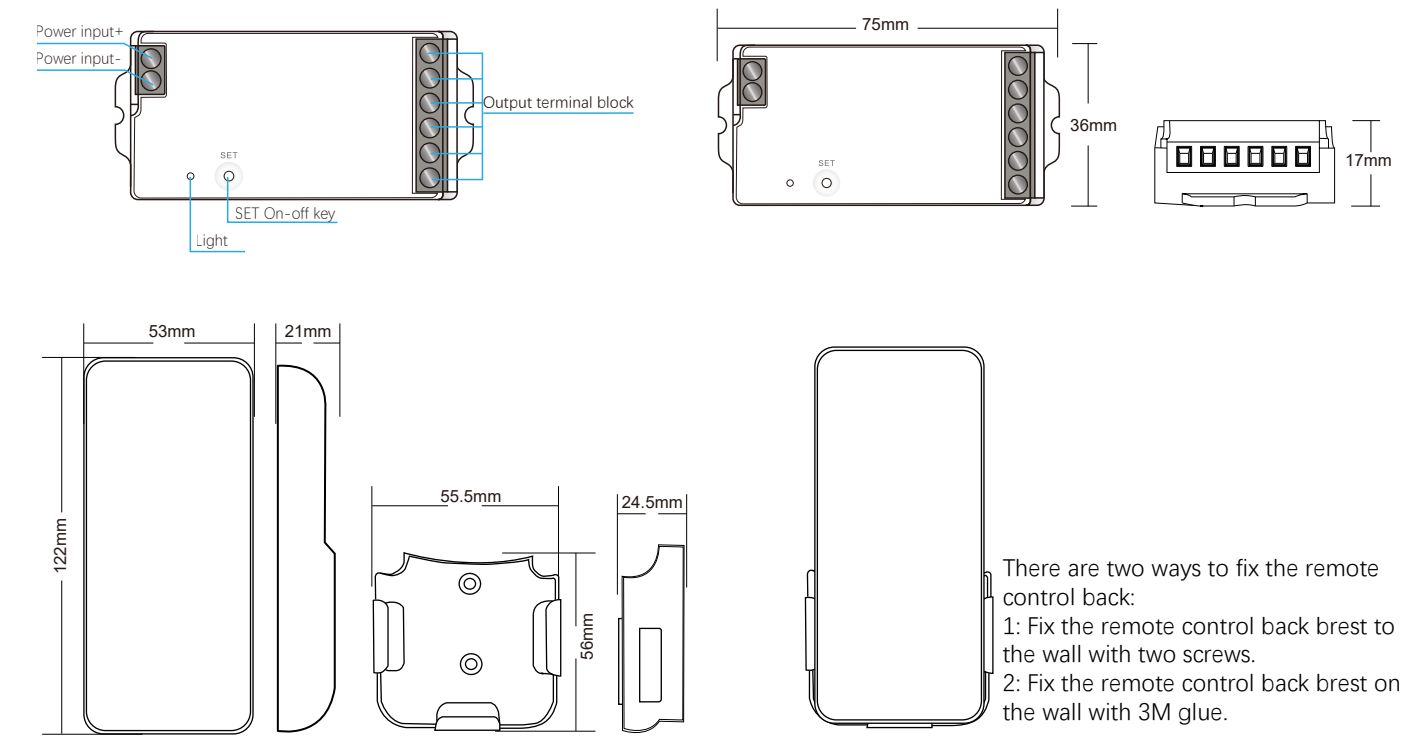
#### LED remote control

Voltage	3V(AAA*2PCS)
Operating current	10mW
Transmission frequency	MESH (2.4GHz)
Standby power consumption	15μA
Transmit power	6dBm
Dimming range	1-100% Infinitely dimming
Remote control distance	30M
Size	L122XW53XH21mm
Operating temperature	Ta: -20°C ~ +60°C
Authentication	CE,ROHS

#### Wrap

Package size	L13XW5.8XH2.7cm/0.105kg
Box size (100 pcs)	L27XW30XH15cm/11kg

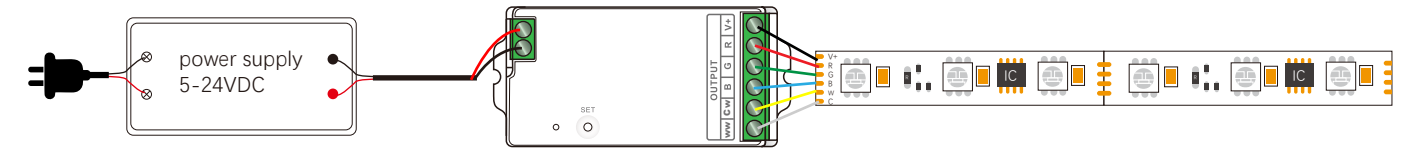
Equipment mechanism and installation



Wiring diagram of the device

Connect the strip light

AC100-240V



Description of the function of the remote control



R-105Remote Control Mode Comparison Table

Dynamic Mode Comparison Table					
S/N	MODE	S/N	MODE	S/N	MODE
1	Red breath	2	Green Breath	3	Blue Breath
4	Tricolor w changes slowly	5	Green breathing	6	Purple breath

S/N	MODE	S/N	MODE	S/N	MODE
7	White light breathing	8	Red and green breathing	9	Red and blue breathing
10	Tricolor w changes slowly	11	Colorful flashes	12	Flashing red
13	Flashing green	14	Flashing blue	15	Yellow flashing
16	Cyan flashes	17	Purple flashes	18	White light flashes
19	Red and green flashing	20	Red and blue flashing	21	Green and blue flashing
22	Yellow breathing	23	Green and blue breathing	24	Blue breath
25	Blue W breathes	26	Green W breathe	27	Yellow W breathing
28	Colorful flashes	29	Red flash	30	Green flash
31	Blue flashes	32	Yellow flash	33	Cyan Flash
34	Purple flash	35	White light flashed	36	Tricolor flashing
37	Three-color gradient	38	Three-color jump	39	Colorful jumps
40	Colorful gradients				

Note: Except for mode 4, the brightness speed is not adjustable, and the speed of mode 10 is adjustable, and the other modes are brightness adjustable and speed adjustable.

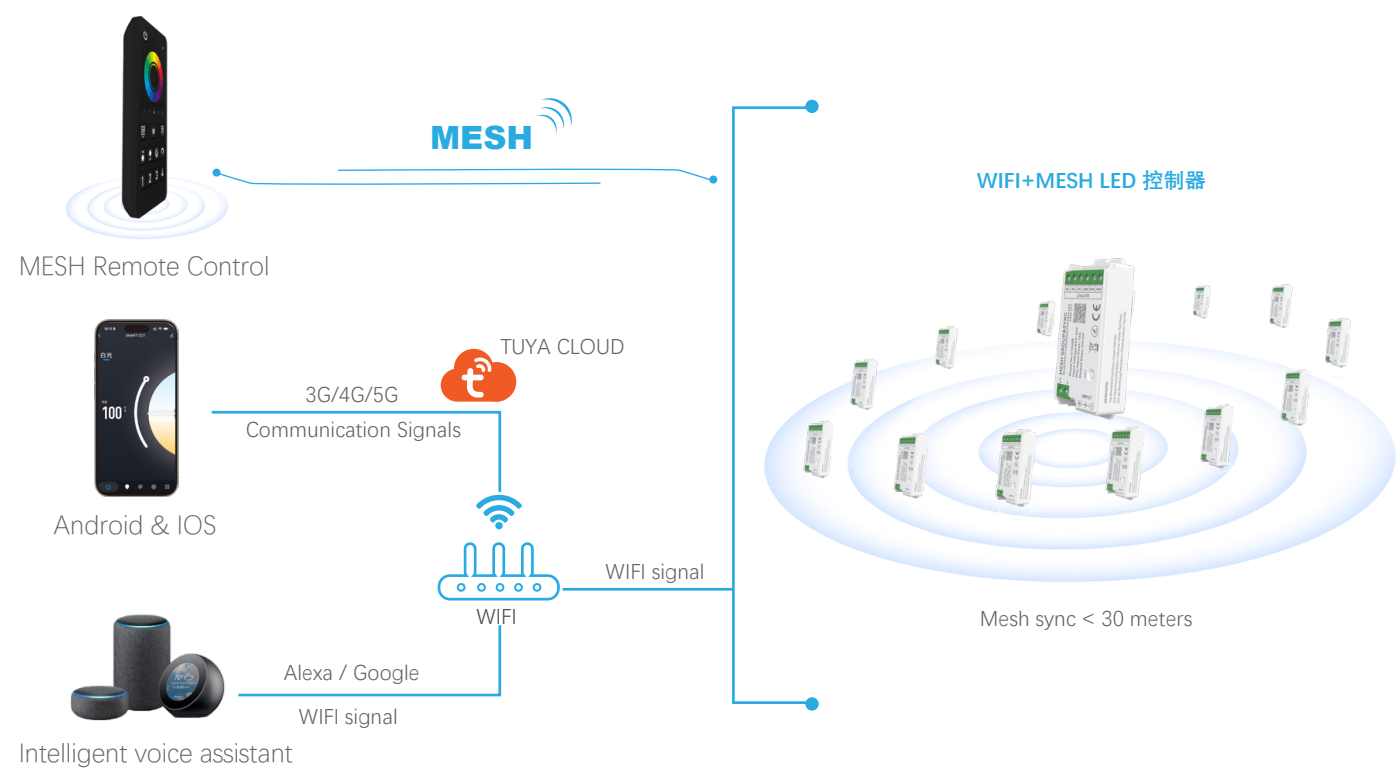
Music Mode Comparison Table

S/N	MODE	S/N	MODE	S/N	MODE
1	The seven colors follow the music gradient	2	The seven colors dance to the music	3	Seven colors flicker along with the music
4	The seven colors breathe to the music				

Note: The brightness and speed are not adjustable in music mode

## Schematic diagram of the control connection

### Mesh wireless transmission



# Tuya smart download & APP network connection

## 1. Download and install the [Smart Life] or [Tuya Smart] APP

Search for [Tuya Smart] on Apple or Google Play or scan the QR code below to download and install the app.  
Please click on the "Sign Up" button to create an account and use it for the first time, if you already have an account, log in directly.

Please download the corresponding Tuya/Smart Life APP according to your region.



Scan the QR code to download the APP

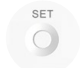





Smart Life APP



Tuya Smart APP

## 2. Product function description > reset the device

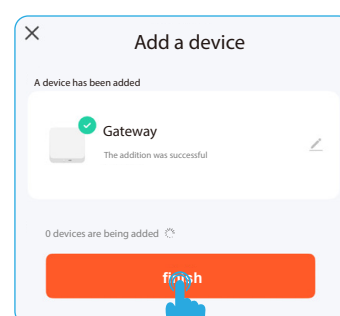
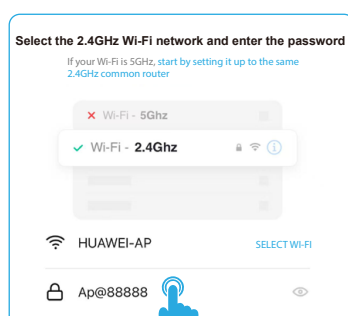
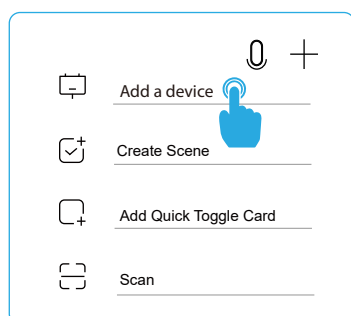
function		Button mode	Power-off mode
 'SET'key	ON/OFF	Short press (release within 1s)	N/A
 MESH Remote Control	The remote control is paired	Press (3S) The indicator light flashes quickly	3 Times
 Android & IOS	WiFi Connect	Press (5S) The indicator light flashes quickly	5 Times
	Clean up and reset	Press and hold (10S) to The controller indicator flashes quickly	10 Times

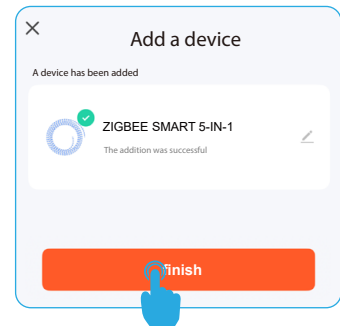
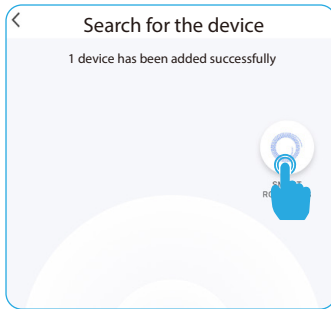


## 3. Connect to your smartphone

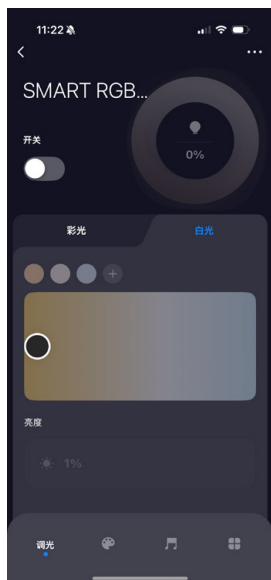
1. Make sure your smartphone is working under a WLAN network.
2. Open the Tuya APP, select Manually Add Gateway Central Control, select Zigbee Gateway, and enter the WIFI password to connect (Incorrect WIFI password will cause the connection to fail, non-2.4G network WIFI also.)
3. Reset the Zigbee gateway device, the red and blue lights of the Zigbee gateway are always on, turn on the power supply, please confirm that the red light is flashing, the blue light is always on, and the red light is always on after the connection is successful.
4. Click Done to enter the gateway control interface, add sub-devices, and confirm that the sub-devices belong to the network configuration mode (please place the gateway, controller, and smartphone close to each other for quick speed.)
5. After the controller is installed in the APP, we can easily control the LED lighting with the APP.

Follow these steps to complete the connection:





## Tuya APP interface



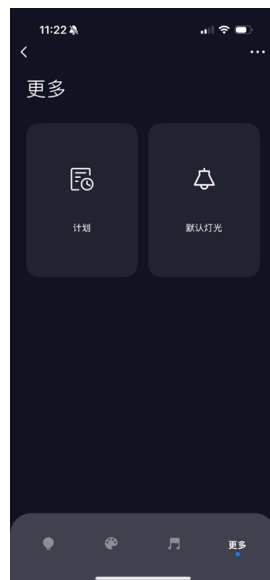
Dimming mode



Scenario mode



Music mode



More pages



Settings page

**Dimming mode: color light:** adjust the color and brightness of the light, add one-click quick color. White light: Adjust the color temperature and brightness of the light

**Scenario Modes:** Eight scenario modes to choose from

**Music Mode: Local Music:** The microphone of the device collects music, and the lights move accordingly. There are five preset grooves with adjustable sensitivity. Three custom modes to edit grooves, two animations can be edited, jump and classic, edit color and sensitivity.  
**APP music:** The mobile phone collects the microphone, and the light moves accordingly. There are five preset grooves. Three custom modes to edit the groove, you can edit two kinds of animation, jump and breath, edit the color, sensitivity, there are two rhythm modes of decibel and tone, and the min/maximum decibel can be adjusted from 0 to 100db

**More pages:** Schedule: Customize the countdown time to perform the on/off light action, and the lights will automatically turn off after the countdown ends.

Default Light: Select the default light state every time it is turned on from the power supply; DIY lighting available.

**Settings page:** This interface can be bound with third-party language control, one-click execution and automation, group creation, device sharing and other functions.

## Safety Precautions

1. The remote control is a precision electronic product, please do not use it in a humid or high temperature environment for a long time. If not in use for a long time, remove the battery and store it in a cool, dry place.
2. Do not use this device in a large area of metal or in an environment with strong electromagnetic waves nearby, otherwise it will seriously affect the control distance
3. Please check whether the input voltage of the constant voltage power supply meets the requirements of the controller, and check whether the connection of the cathode and anode is correct.
4. The working voltage is DC 5~24V, if the voltage is higher than 24V, the controller will be damaged.
5. Non-professional users cannot directly disassemble the controller, otherwise it may cause fire and electric shock.
6. The working temperature (Ta) is -20~60°C; Do not use the appliance in direct sunlight, humidity, or other high-temperature areas.
7. When the equipment load reaches 15A, the wire diameter must be more than 1.5 square millimeters
8. When the device load exceeds 10A, the connection cable from the DC port to the LED strip must be shorter than 40cm.
9. Please install the device in a good heat dissipation area.