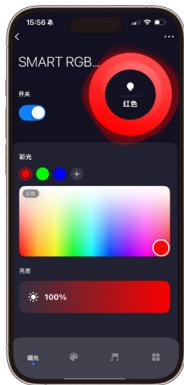




R-103+C-103Z

RGB LED MESH+ZIGBEE 3.0 Controller set

CE RoHS

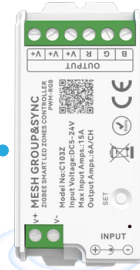


TUYA APP



R-103

MESH+ZIGBEE



C-103Z

Compatible voice assistants (Support language command switch and brightness adjustment.)



小米小爱



小智管家



天猫精灵



百度小度



Amazon Alexa



Yandex Alice



Google Assistant

Local Remote Control:

MESH remote control realizes local physical key control (such as switching, group switching, basic dimming) through MESH, which is suitable for the elderly, children or quick operation.

MESH ZIGBEE 3.0 controller, through the ZIGBEE gateway + Wi-Fi + Tuya ecology supports remote APP control, which can finely adjust brightness, color temperature and dynamic effects, and can share devices, create groups and other functions.

peculiarity

- MESH wireless transmission technology, stable signal and strong penetration.
- MUST BE USED WITH ZIGBEE GATEWAY.
- Support matching multiple devices, multiple devices can be controlled at the same time, and one remote control can manage and synchronize up to 500 controllers. Each controller can be supported by 10 remote controls. (Control distance 30 meters)
- The brightness 、 Temperature 、 color of the remote control can be adjusted according to personal preference, and the color and speed of the dynamic mode can be edited.
- The controller can adjust the brightness, color temperature, voice control, select various dynamic or custom scenario modes, timing, countdown and other functions through the Tuya/Smart Life APP.
- Device click to run and automate, automatic transfer and synchronization function.
- PWM (Pulse Width Modulation) technology is adopted to ensure smooth light transition and avoid eye fatigue.
- Voice control, support Asia Alexa, Google Assistant, Tmall Genie, Xiaomi Xiaoai voice assistant and other speakers.
- Support multi-controller cascade, easily cover large-area lighting scenes such as shopping malls, theaters, building facades, etc.

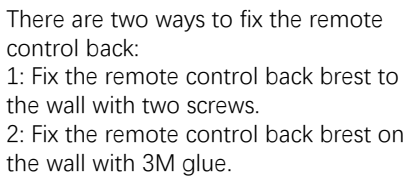
Device parameters

LED controllers

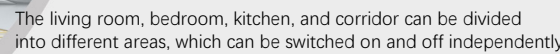
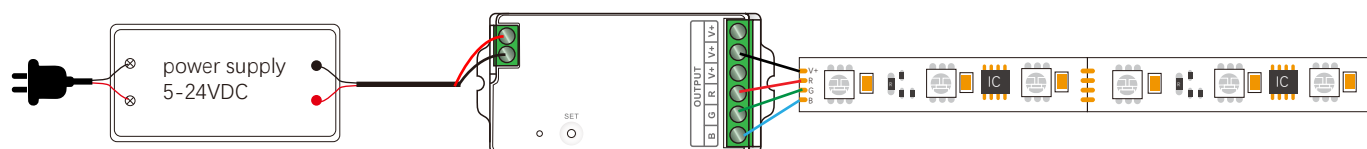
Input voltage	DC 5-24V
Input current	6/CH; 15A max
Access signal	MESH+ZIGBEE
Control the distance	30M
Size	L75XW36XH17mm
Authentication	CE,ROHS
Environment	
Operating temperature	Ta:-20°C~+60°C
Maximum temperature of the case	Tc:+65°C
IP rating	IP20
Wrap	
Package size	L7.6XW3.7XH2.1cm/0.04kg
Box size (100 pcs)	L19XW16XH12cm/4.2kg

LED remote control

Voltage	3V(AAA*2PCS)
Operating current	10mW
Transmission frequency	MESH (2.4GHz)
Standby power consumption	15μA
Transmit power	6dBm
Dimming range	1-100% Infinitely dimming
Remote control distance	30M
Size	L122XW53XH21mm
Operating temperature	Ta:-20°C~+60°C
Authentication	CE,ROHS
Wrap	
Package size	L13XW5.8XH2.7cm/0.105kg
Box size (100 pcs)	L27XW30XH15cm/11kg



AC100-240V



Dynamic Mode Comparison Table

S/N	MODE	S/N	MODE	S/N	MODE
1	Seven colors jump	2	Red flash	3	Green flash
4	Blue flashes	5	Yellow flash	6	Cyan Flash

S/N	MODE	S/N	MODE	S/N	MODE
7	Purple flash	8	White light flashed	9	Three-color jump
10	Three-color strobe	11	Seven colors alternate	12	The three colors flickered and flickered
13	Seven-color gradient				

Note: The brightness is adjustable and the speed is adjustable

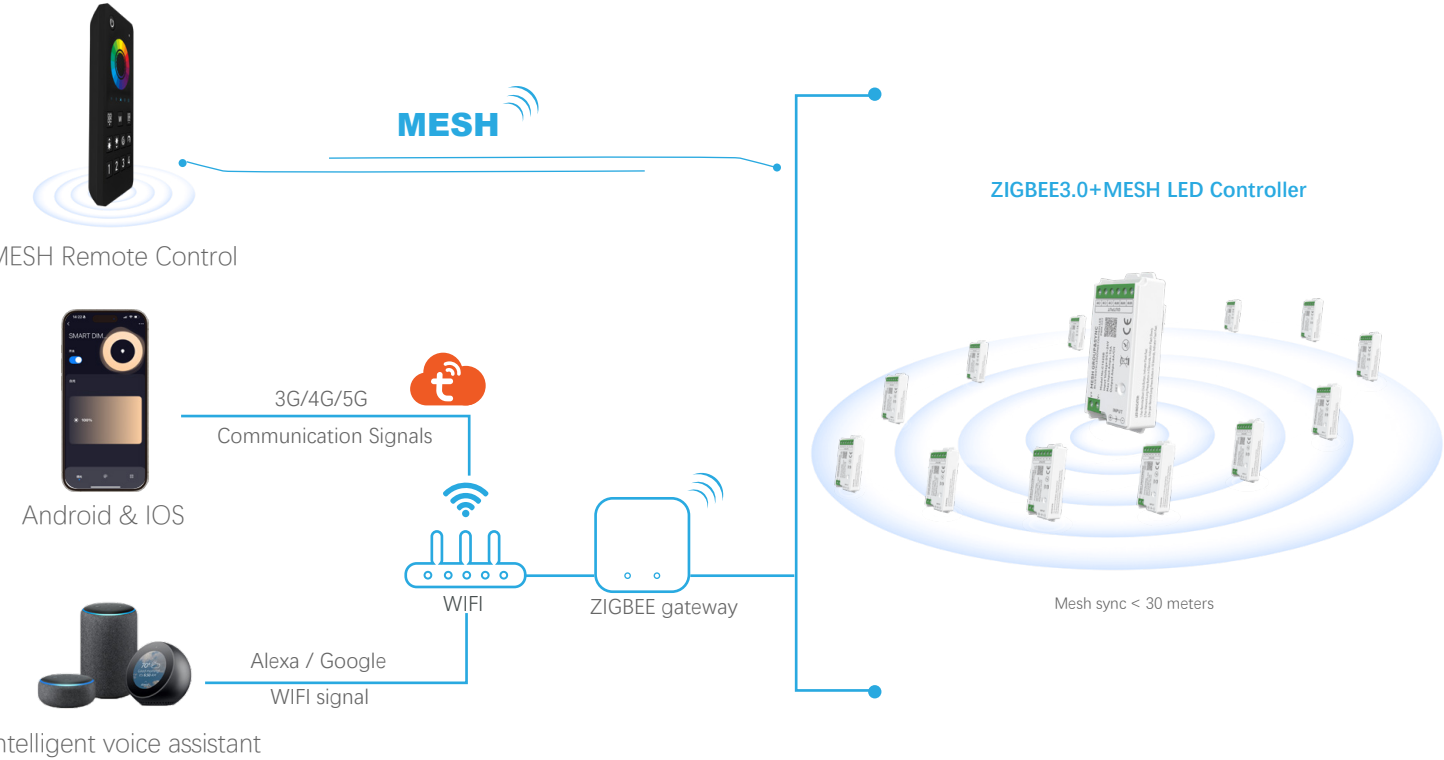
Music Mode Comparison Table

S/N	MODE	S/N	MODE	S/N	MODE
1	Colorful beats to the music	2	Colorful gradients follow the music	3	Colorful dance to the music
4	Colorful flashes along with the music				

Note: The brightness and speed are not adjustable in music mode

Schematic diagram of the control connection

Mesh wireless transmission



Tuya smart download & APP network connection

1. Download and install the [Smart Life] or [Tuya Smart] APP

Search for [Tuya Smart] on Apple or Google Play or scan the QR code below to download and install the app. Please click on the "Sign Up" button to create an account and use it for the first time, if you already have an account, log in directly.

Please download the corresponding Tuya/Smart Life APP according to your region.



Scan the QR code to download the APP







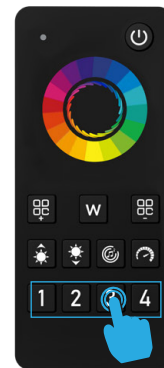
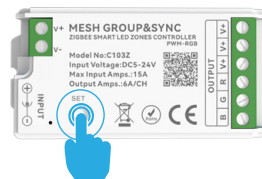
Smart Life APP



Tuya Smart APP

2. Product function description > reset the device

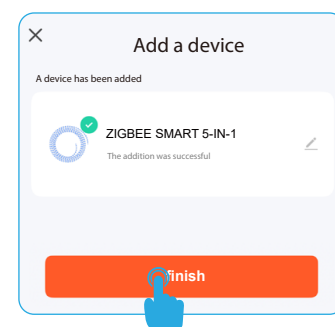
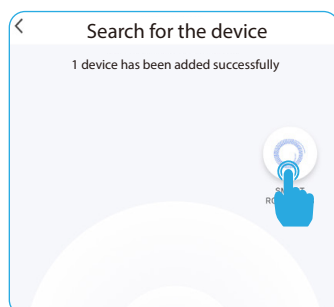
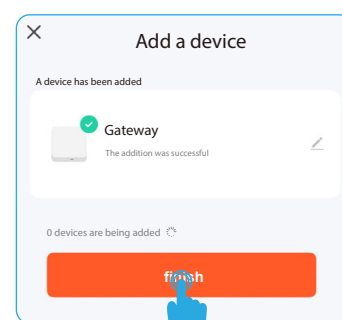
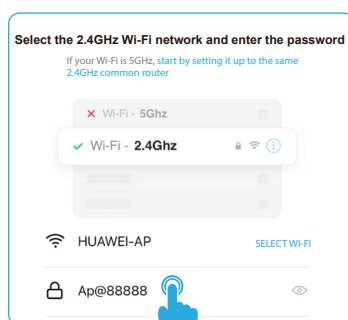
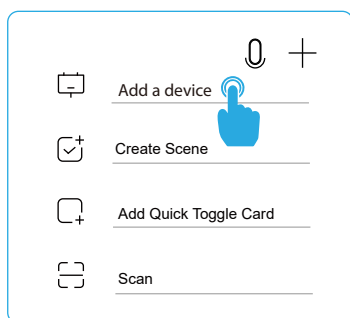
function		Button mode	Power-off mode
	'SET'key	ON/OFF	Short press (release within 1s)
	MESH Remote Control	The remote control is paired	Press (3S) The indicator light flashes quickly
	Android & IOS	WiFi Connect	Press (5S) The indicator light flashes quickly
	Clean up and reset		Press and hold (10S) to The controller indicator flashes quickly



3. Connect to your smartphone

1. Make sure your smartphone is working under a WLAN network.
2. Open the Tuya APP, select Manually Add Gateway Central Control, select Zigbee Gateway, and enter the WIFI password to connect (Incorrect WIFI password will cause the connection to fail, non-2.4G network WIFI also.)
3. Reset the Zigbee gateway device, the red and blue lights of the Zigbee gateway are always on, turn on the power supply, please confirm that the red light is flashing, the blue light is always on, and the red light is always on after the connection is successful.
4. Click Done to enter the gateway control interface, add sub-devices, and confirm that the sub-devices belong to the network configuration mode (please place the gateway, controller, and smartphone close to each other for quick speed.)
- Pairing identification) long press the controller "SET" for 5 seconds, after the connection is successful, the sub-device will be displayed on the home page, then tap the device and enter the control interface to do more.
5. After the controller is installed in the APP, we can easily control the LED lighting with the APP.

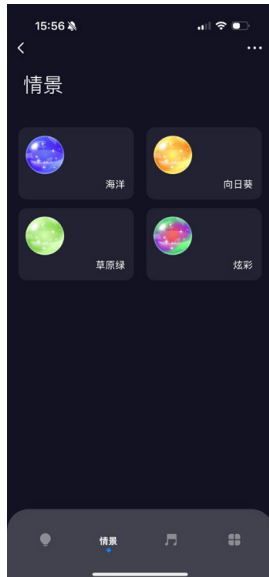
Follow these steps to complete the connection:



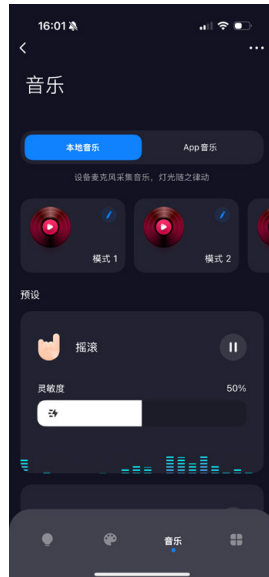
Introduction to the functions of the APP interface



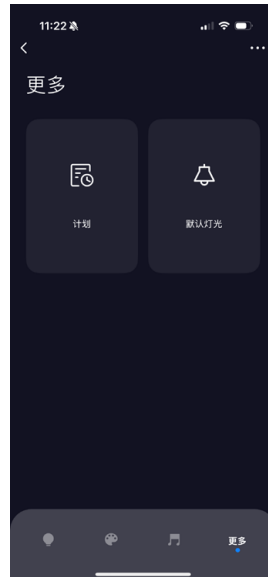
Dimming mode



Scenario mode



Music mode



More pages



Settings page

Dimming mode: Adjust the color and brightness of the light, and add a one-click quick color.

Profiles: Four profiles to choose from

Music Mode: Local Music: The microphone of the device collects music, and the lights move accordingly. There are five preset grooves with adjustable sensitivity. Three custom modes to edit grooves, two animations can be edited, jump and classic, edit color and sensitivity.
APP music: The mobile phone collects the microphone, and the light moves accordingly. There are five preset grooves. Three custom modes to edit the groove, you can edit two kinds of animation, jump and breath, edit the color, sensitivity, there are two rhythm modes of decibel and tone, and the min/maximum decibel can be adjusted from 0 to 100db

More pages: Schedule: Customize the countdown time to perform the on/off light action, and the lights will automatically turn off after the countdown ends.

Default Light: Select the default light state every time it is turned on from the power supply; DIY lighting available.

Settings page: This interface can be bound with third-party language control, one-click execution and automation, group creation, device sharing and other functions.

Safety Precautions

1. The remote control is a precision electronic product, please do not use it in a humid or high temperature environment for a long time. If not in use for a long time, remove the battery and store it in a cool, dry place.
2. Do not use this device in a large area of metal or in an environment with strong electromagnetic waves nearby, otherwise it will seriously affect the control distance
3. Please check whether the input voltage of the constant voltage power supply meets the requirements of the controller, and check whether the connection of the cathode and anode is correct.
4. The working voltage is DC 5~24V, if the voltage is higher than 24V, the controller will be damaged.
5. Non-professional users cannot directly disassemble the controller, otherwise it may cause fire and electric shock.
6. The working temperature (Ta) is -20~60°C; Do not use the appliance in direct sunlight, humidity, or other high-temperature areas.
7. When the equipment load reaches 15A, the wire diameter must be more than 1.5 square millimeters
8. When the device load exceeds 10A, the connection cable from the DC port to the LED strip must be shorter than 40cm.
9. Please install the device in a good heat dissipation area.