

C310Z Series MESH Series Remote Control

Waterproof IP68 MESH ZIGBEE LED CONTROLLER MESH REMOTE CONTROL SET



C-311Z/DIM **zigbee**
2PIN PWM LED Strip



C-312Z/CCT **zigbee**
3PIN PWM LED Strip



C-313Z/RGB **zigbee**
4PIN PWM LED Strip



C-314Z/RGBW **zigbee**
5PIN PWM LED Strip



C-315Z/RGBWC **zigbee**
6PIN PWM LED Strip

Compatible remote controls A single device can support 10 remote controls at the same time



R-101/DIM



R-102S/CCT



R-102/CCT



R-103/RGB



R-104/RGBW



R-105/RGBCCT



R-011/DIM



R-023/3 WAY

...

Compatible voice assistants

Support language command switch, brightness, color.



Amazon Alexa



Yandex Alice



Google Assistant



已接入米家
works with
mijia



小米小爱



tuya 小智管家



天猫精灵



百度小度

IP68 Waterproof MESH LED Controller is a Smart LED product with IP68 waterproof performance, which is used to control various lamps with led as light source, and its controller can support MESH signals.

The connection adopts the advantages of waterproof interface, shell laser marking is not easy to fall, flexible and fast operation, convenient wiring, etc., which can be widely used in outdoor, decoration scene lighting and other places

peculiarity

- MESH wireless transmission technology, stable signal and strong penetration.
- Support matching multiple devices, multiple devices can be controlled at the same time, and one remote control can manage and synchronize up to 500 controllers. Each controller can be supported by 10 remote controls.(Control distance 30 meters)
- The brightness of the remote control can be adjusted according to personal preference, and the brightness and speed of the dynamic mode can be edited.
- The controller can adjust the brightness, color, voice control, select various dynamic or custom scenario modes, timing, countdown and other functions through the Tuya/Smart Life APP.
- Device click to run and automate, automatic transfer and synchronization function.
- PWM (Pulse Width Modulation) technology is adopted to ensure smooth light transition and avoid eye fatigue.
- Voice control, support Asia Alexa, Google Assistant, Tmall Genie, Xiaomi Xiaoi voice assistant and other speakers.
- Support multi-controller cascade, easily cover large-area lighting scenes such as shopping malls, theaters, building facades, etc.
- With IP68 protection level, it can completely prevent dust from entering, and can work normally in a long-term immersion environment, can resist heavy rain, water splash, soaking, etc., and is suitable for outdoor humid environments, underwater environments and indoor high-humidity places

Device parameters

LED controllers

Input voltage	DC 24-48V
Input current	6/CH; 15A max
Access signal	MESH+ZIGBEE
Control the distance	30M
Size	L156XW70XH30mm
Authentication	CE,ROHS

Environment

Operating temperature	Ta:-20°C~+60°C
Maximum temperature of the case	Tc:+65°C
IP rating	IP68

Wrap

Package size	L42.7XW10.5XH3.8cm/0.27kg
Box size (100 pcs)	L54XW51.5XH20cm/14.5kg

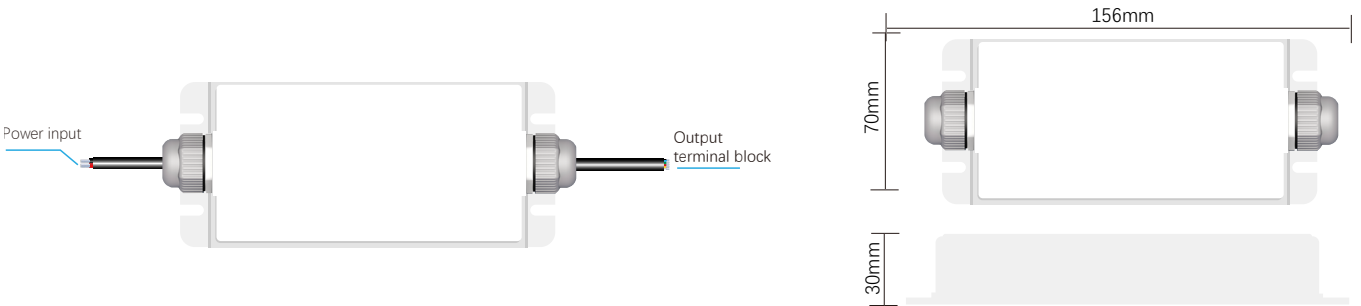
LED remote control

voltage	3V(AAA*2PCS)
Operating current	10mW
Transmission frequency	MESH (2.4GHz)
Transmit power	6dBm
Color temperature range	2700K-6500K
Dimming range	1-100% Infinitely dimming
Remote control distance	30M
Size	L122XW53XH21mm
Operating temperature	Ta:-20°C~+60°C
Authentication	CE,ROHS

Wrap

Package size	L13XW5.8XH2.7cm/0.105kg
Box size (100 pcs)	L27XW30XH15cm/11kg

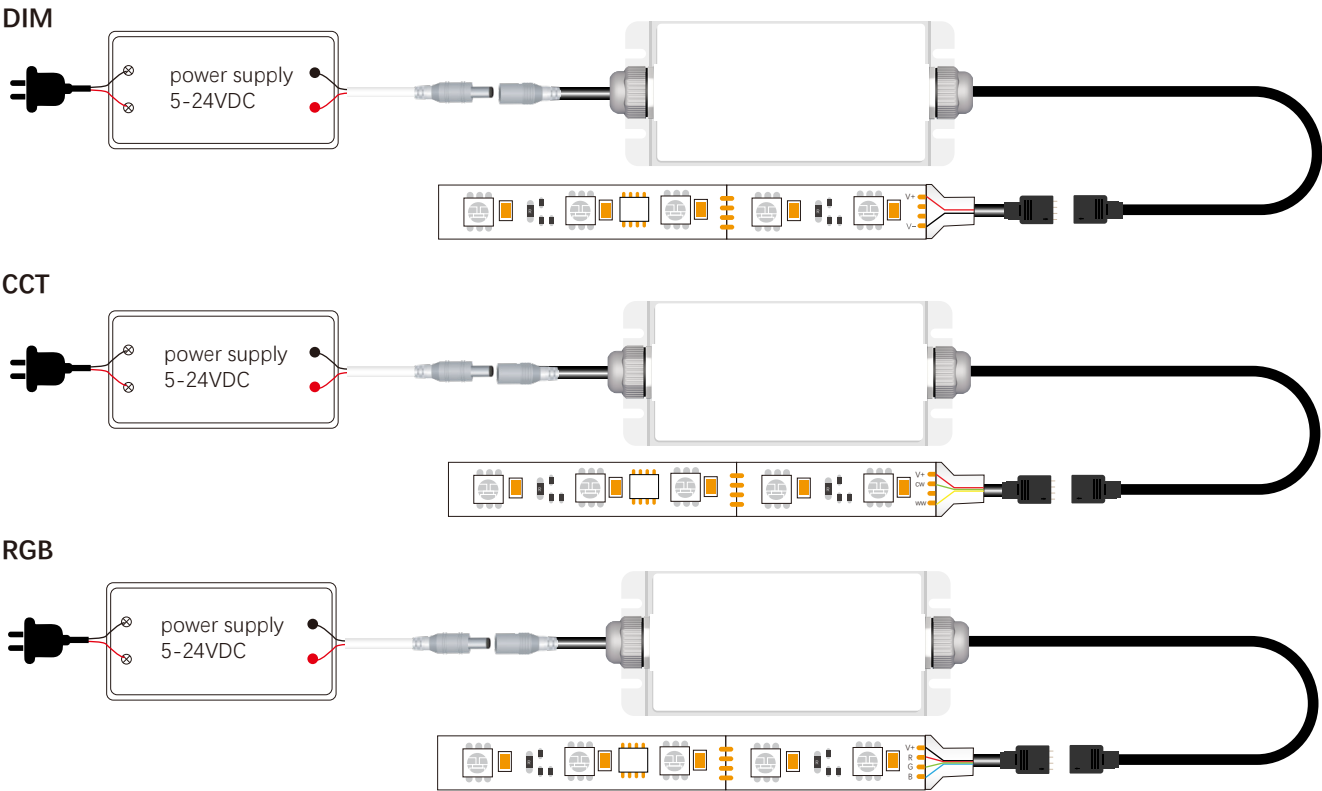
Equipment mechanism and installation



Wiring diagram of the device

Connect the strip light

AC100-240V







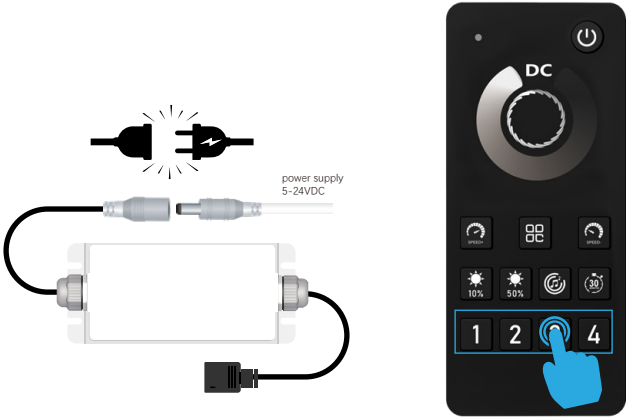
MESH wireless communication technology



Page 3

2. Product function description & reset the device

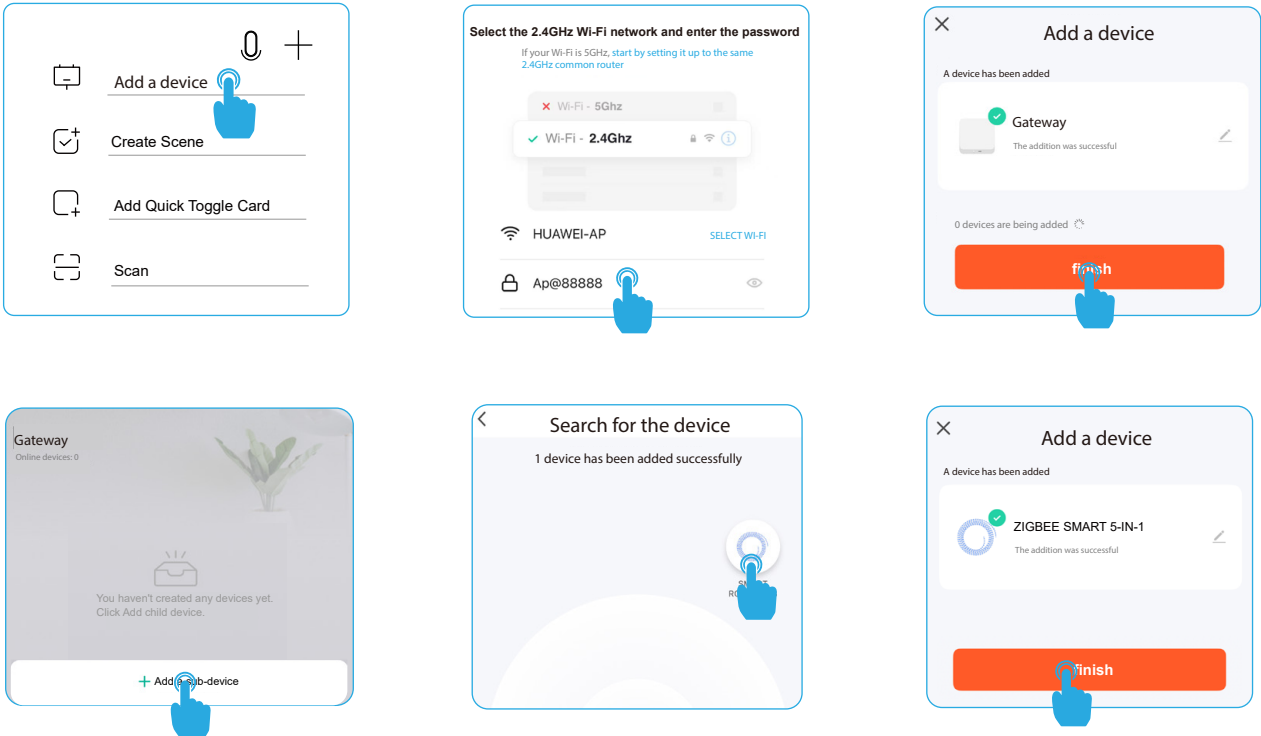
function		Power-off mode
 'SET' key	ON/OFF	N/A
 MESH Remote Control	The remote control is paired	3 Times
 Android & IOS	WiFi Connect	5 Times
	Clean up and reset	10 Times



3. Connect to your smartphone

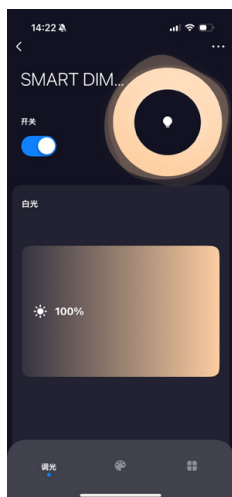
1. Make sure your smartphone is working under a WLAN network.
2. Open the Tuya APP, select Manually Add Gateway Central Control, select Zigbee Gateway, and enter the WIFI password to connect (Incorrect WIFI password will cause the connection to fail, non-2.4G network WIFI also.)
3. Reset the Zigbee gateway device, the red and blue lights of the Zigbee gateway are always on, turn on the power supply, please confirm that the red light is flashing, the blue light is always on, and the red light is always on after the connection is successful.
4. Click Done to enter the gateway control interface, add sub-devices, and confirm that the sub-devices belong to the network configuration mode (please place the gateway, controller, and smartphone close to each other for quick speed.)
- Pairing identification) long press the controller "SET" for 5 seconds, after the connection is successful, the sub-device will be displayed on the home page, then tap the device and enter the control interface to do more.
5. After the controller is installed in the APP, we can easily control the LED lighting with the APP.

Follow these steps to complete the connection:

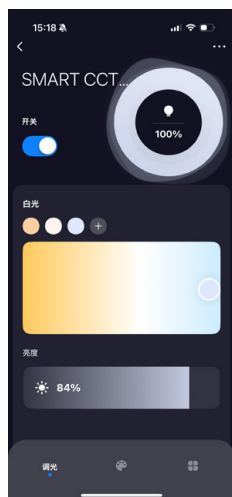


Tuya APP interface

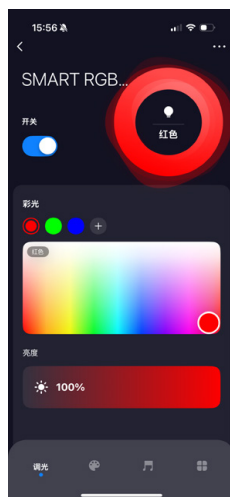
Main interface: white light mode; color temperature mode; IPL mode; Color light mode+ White light mode; Color light mode+ color temperature mode;



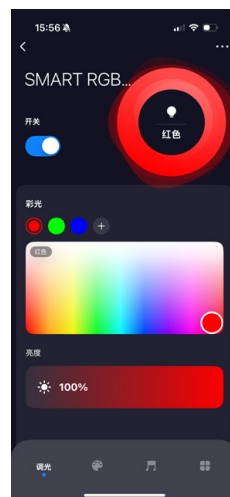
white light mode
DIM



color temperature mode
CCT



IPL mode
RGB



Color light mode+
White light mode
RGBW

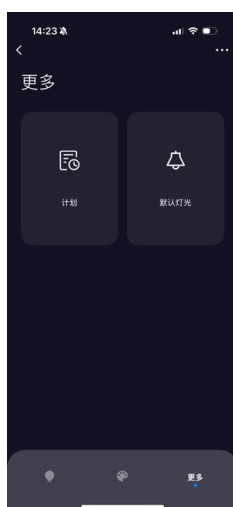


Color light mode+
color temperature mode;
RGCCT

C-311 and C-312 Tuya app interface



Scenario mode



More pages



Settings page

Scenario mode: Four scenario modes to choose from.

More page: Schedule: Customize the countdown time to perform the on/off light action, and the light will automatically turn off when the countdown ends.

Default Light: Select the default light state to be turned on from the power supply each time; DIY lighting available.

Settings page: This interface can be bound with third-party language control, one-click execution and automation, group creation, device sharing and other functions.

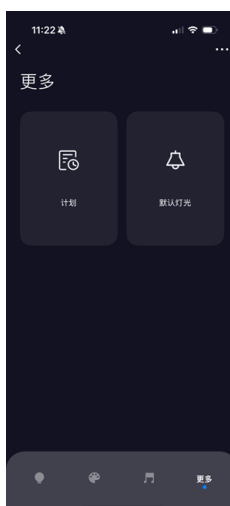
C-313、C-314、C-315 Tuya app interface



Scenario mode



Music mode



More pages



Settings page

Scenario mode: Eight scenario modes to choose from

Music mode: Local music: The device microphone collects music, and the lights move with it. There are five preset rhythms with adjustable sensitivity. Three custom modes to edit the rhythm, and two types of movements can be edited Effects, jumps and classics, edit color and sensitivity.

APP music: The mobile phone collects the microphone, and the lights rhythm with it. There are five preset grooves. Three custom modes to edit grooves, you can edit two animations, jumping and breathing, Edit color, sensitivity, decibel and pitch rhythm modes, adjustable min/max decibel-0-100db

More page: Schedule: Customize the countdown time to perform the on/off light action, and the light will automatically turn off when the countdown ends.

Default Light: Select the default light state to be turned on from the power supply each time; DIY lighting available.

Settings page: This interface can be bound with third-party language control, one-click execution and automation, group creation, device sharing and other functions.

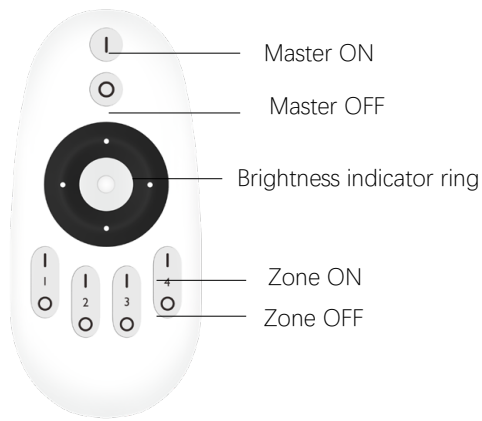
Description of the function of the remote control

Multi-function grouped Remote control

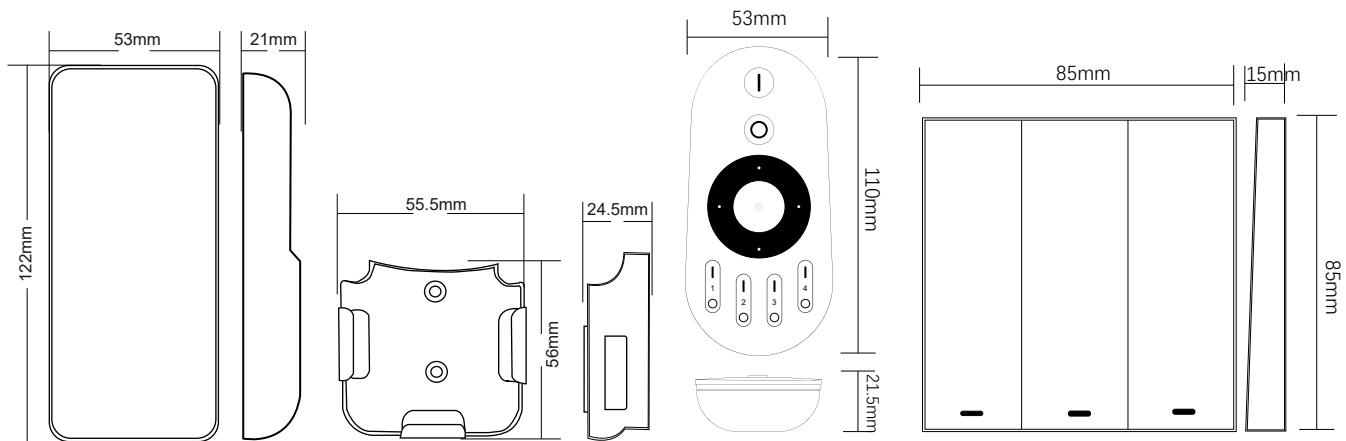
 Main ON/OFF button **1 2 3 4** Grouping key Short press; Select the key function. Long press; Perform key functions.



Grouped simple Remote control



Feel free to stick switches



Safety Precautions

1. The remote control is a precision electronic product, please do not use it in a humid or high temperature environment for a long time. If not in use for a long time, remove the battery and store it in a cool, dry place.
2. Do not use this device in a large area of metal or in an environment with strong electromagnetic waves nearby, otherwise it will seriously affect the control distance
3. Please check whether the input voltage of the constant voltage power supply meets the requirements of the controller, and check whether the connection of the cathode and anode is correct.
4. The working voltage is DC 5~24V, if the voltage is higher than 24V, the controller will be damaged.
5. Non-professional users cannot directly disassemble the controller, otherwise it may cause fire and electric shock.
6. The working temperature (Ta) is -20~60°C; Do not use the device in direct sunlight, humidity, or other high-temperature areas.
7. When the equipment load reaches 15A, the wire diameter must be more than 1.5 square millimeters
8. When the device load exceeds 10A, the connection cable from the DC port to the LED strip must be shorter than 40cm.
9. Please install the device in a good heat dissipation area.