



TUYA Bluetooth 3 key 38 button rainbow LED controller

RGBW Remote Control BLUETOOTH Controller Set

CE RoHS



AP-07-00503-White



AP-07-00503-Black

Features

1. The TUYA APP has two modes of control, infrared IR and app control;
2. Supports automatic connection to devices when the app starts and automatic reconnection to devices when disconnected;
3. Supports control of multiple device groups;
4. Supports various music collection modes: phone microphone, player streaming, and onboard microphone;
5. Supports modifying device names, calibrating RGB channel order, and timer functions;
6. Supports common single-line LED driver ICs in the market, capable of driving 600 pixel points;
7. Supports adjusting the length of dynamic mode effects, saving dynamic modes, and allows dynamic and saved modes to loop independently;
8. Built-in 12 color-changing modes, 6 music modes, supports adjusting music mode effect length, sensitivity adjustment, customizable effect colors, and music mode looping;
9. Wide voltage input of DC5~24V, power supply has reverse polarity protection;
10. Power loss saved setting parameters.

Device parameters

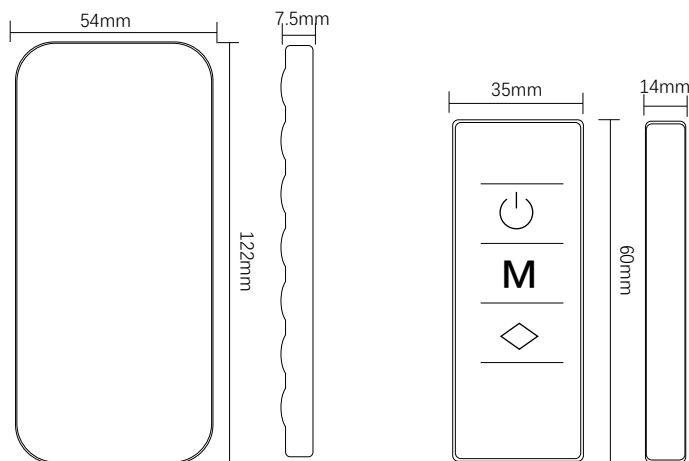
LED controller

Input voltage	5-24VDC
Access signal	BLUETOOTH
Number of pixels	600
Size	L35XW60XH14mm(LXHXW)

LED remote control

Voltage	CR2025
Operating current	5mA~18mA
Control distance	IR15M
Size	122*54*7.5mm(LXHXW)

尺寸图



Key instructions

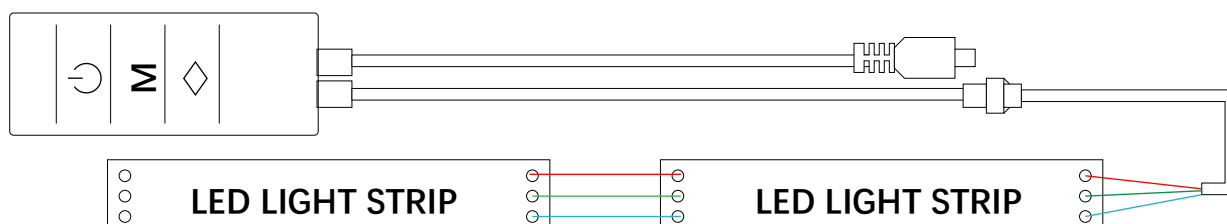
RF Remote Control

ON	OF	16 static monochromes		Rainbow effect	Meteor effect	Breathing effect	Jumping effect	Dynamic mode+	Dynamic mode-	Collect+	Collect-
Reset	Collect (up to four)	Speed-	Speed+	Brightness-	Brightness+	Length-	Length+	Music mode-	Music mode+	Music mode Loop	Full color switching

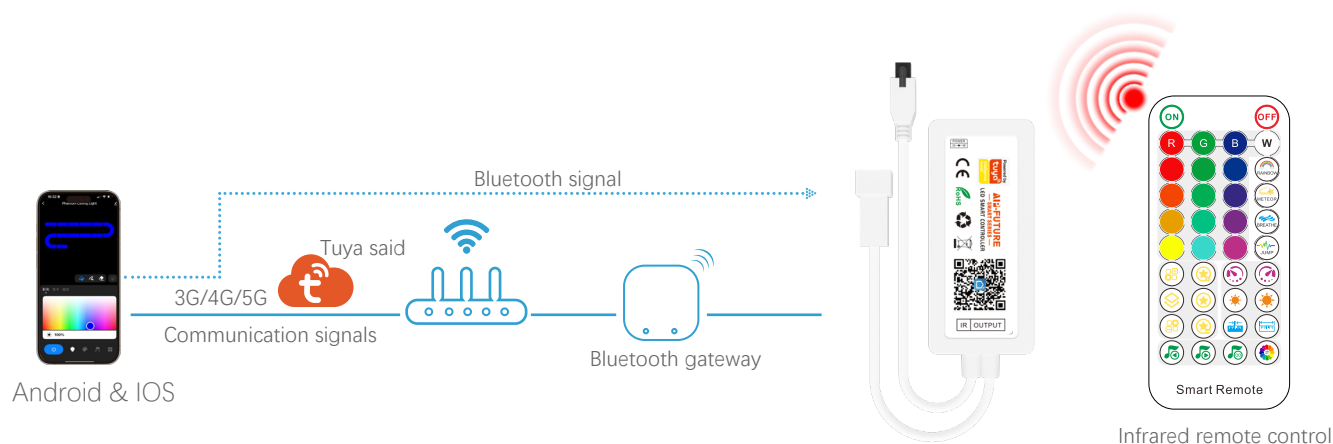
Explanation of controller buttons

Power button	Mode key M	Music key
Open and close the controller	The mode key is used to switch non-musical effects.	Adjust the effect of the music mode

Equipment wiring diagram



Control connection diagram



Tuya Smart Download & APP Network Connection

1. Download and install the [Smart Life] or [Tuya Smart] APP

Search for [Tuya Smart] on the Apple or Google Play or scan the QR code below to download and install the app. Click the "Sign Up" button to create an account and use it for the first time, or log in directly if you already have one.



Scan the QR code to download the APP



Tuya Smart APP

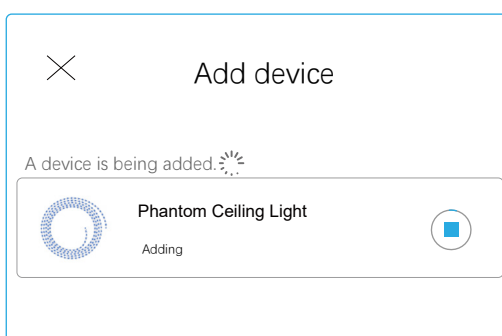
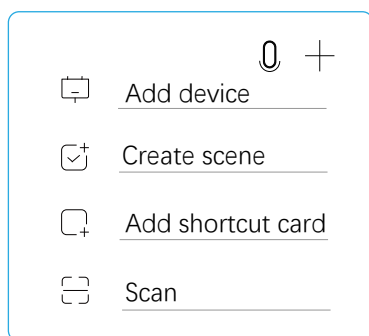


Smart Life

2. Connect to smartphone

1. Press and hold the power button for 5 seconds, the light strip will display a white breathing effect.
2. Ensure that the smartphone is connected to a WLAN network and that Bluetooth is turned on.
3. Open the login app, click the "+" in the upper right corner to add a device, and wait for 5-10 seconds to complete pairing.
4. After a successful connection, the new device will appear on the homepage; then click on the device to enter the control interface for more operations.

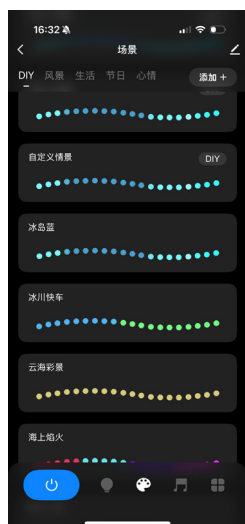
Follow the steps below to complete the connection:



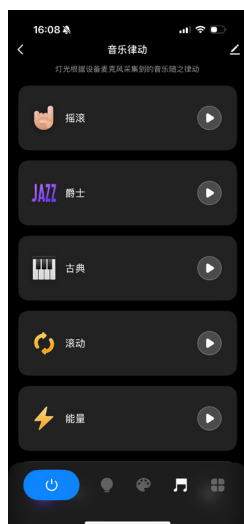
TUYA APP interface



Color light interface



Scene interface



Music Rhythm Interface



Other interfaces



Settings interface

Color light interface: This interface allows you to DIY, add and delete the number of light strips, adjust the color and brightness of the light strips, and choose from colorful lights, color blocks, and card groups to adjust the colors.

Scene interface: There are 41 scene modes to choose from, and you can DIY your own scenes, including gradient, jump, breathing, flashing, flowing, etc. Click on the color light and color palette to select your desired color, and you can modify the brightness and speed. You can choose to DIY the entire segment or in sections, allowing for customization of up to 100 scenes.

Music Rhythm Interface: There are 6 rhythmic effects to choose from, and the lights can dance according to the music captured by the device's microphone, with adjustable sensitivity for the rhythm mode.

Other interfaces:

1. Schedule: Click on the schedule to set a countdown timer for custom on/off actions for the lights. The lights will automatically turn off after the countdown ends.
2. Light strip length: Click on the light strip length to set the length of the light strip from 10 to 600 units. If the light strip is cut during use, you can adjust the actual length for better setting of the light strip.
3. Wire order setting: You can set the order of R, G, B colors.
4. Wire order: You can set the RGB color sequence.

Settings interface: You can change the product name in the Tuya APP on this interface, view device information, share devices, remove devices, and perform other operations.

Notes and Precautions

1. Do not expose the components of this product to direct moisture.
2. Do not expose the components of this product to excessively high temperatures.
3. Please keep it out of the reach of children.
4. Do not mix alkaline batteries, standard batteries, and rechargeable batteries.
5. Do not mix new and old batteries.
6. Batteries that are depleted should be removed from the remote control immediately.