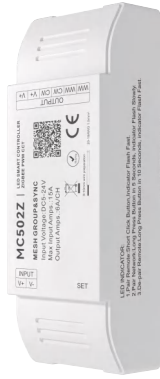




MC501Z-DIM



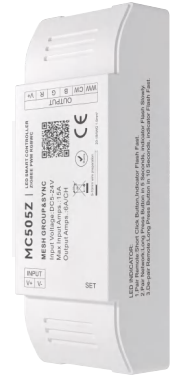
MC502Z-CCT



MC503Z-RGB



MC504Z-RGBW



MC505Z-RGBCCT

Compatible remote control

A single device can support 10 remote controls at the same time



MR101/DIM



MR102/CCT



MR103/RGB



MR104/RGBW



MR105/RGBCCT



MR011/DIM



MR023/3 WAY

Compatible voice assistant

Support language command switch, adjust brightness, and color.



小米小爱



小智管家



天猫精灵



百度小度



Amazon Alexa



Yandex Alice



Google Assistant

Local Remote Control:

MESH remote control realizes local physical key control (such as switching, group switching, basic dimming) through MESH, which is suitable for the elderly, children or quick operation.

MSHE ZIGBEE Controller Through the ZIGBEE gateway Tuya Ecology supports remote APP control, which can finely adjust brightness, color and dynamic effects, and can share devices and create groups and other functions.

peculiarity

- MESH wireless transmission technology, stable signal and strong penetration.
- Each node has a signal relay function, which makes long-distance transmission more sensitive and consumes less power.
- Support matching multiple devices, multiple devices can be controlled at the same time, and one remote control can manage and synchronize up to 500 controllers. Each controller can be supported by 10 remote controls.(Control distance 30 meters)
- The brightness of the remote control can be adjusted according to personal preference, and the brightness and speed of the dynamic mode can be edited.
- The controller can adjust the brightness, color, voice control, select various dynamic or custom scenario modes, timing, countdown and other functions through the Tuya/Smart Life APP.
- Device click to run and automate, automatic transfer and synchronization function.
- PWM (Pulse Width Modulation) technology is adopted to ensure smooth light transition and avoid eye fatigue.
- Voice control, support Asia Alexa, Google Assistant, Tmall Genie, Xiaomi Xiaoai voice assistant and other speakers.
- Support multi-controller cascade, easily cover large-area lighting scenes such as shopping malls, theaters, building facades, etc.

Device parameters

LED controllers

Input voltage	DC 5-24V
Input current	6/CH; 15A max
Access signal	ZIGBEE
Control the distance	30M
Size	L109XW40XH26mm
Authentication	CE,ROHS

Environment

Operating temperature	Ta: -20°C ~ +60°C
Maximum temperature of the case	Tc: +65°C
IP rating	IP20

Wrap

Package size	L125 XW45XH30mm
Box size (100 pcs)	L26 XW24 XH16 cm

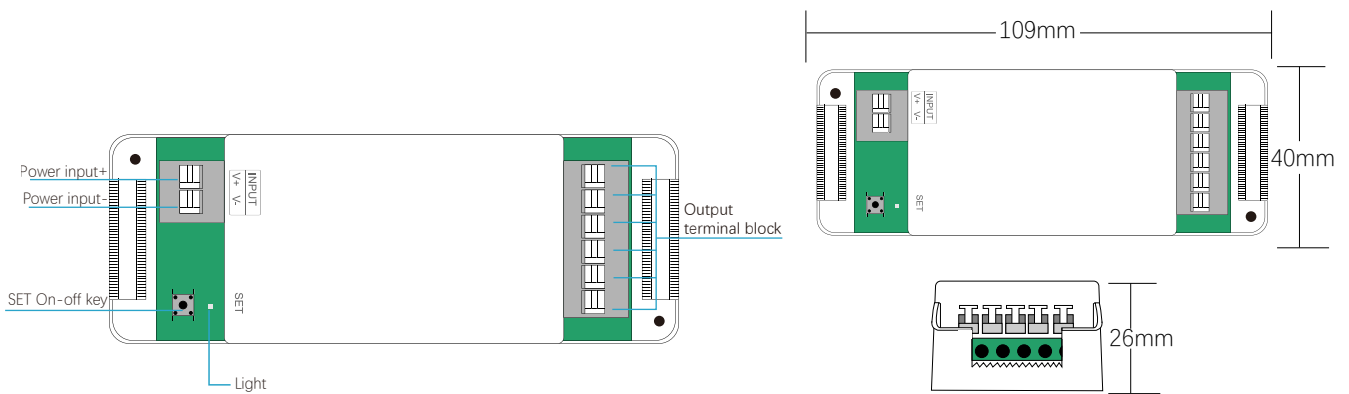
LED remote control

Voltage	3V(AAA+2PCS)
Operating current	10mW
Transmission frequency	MESH (2.4GHz)
Standby power consumption	15uA
Transmit power	6dBm
Color temperature range	3000-6000K
Remote control distance	30M
Size	L122XW53XH21mm
Operating temperature	Ta: -20°C ~ +60°C
Authentication	CE,ROHS

Wrap

Package size	L13XW5.8XH2.7cm/0.105kg
Box size (100 pcs)	L27XW30XH15cm/11kg

Equipment mechanism and installation

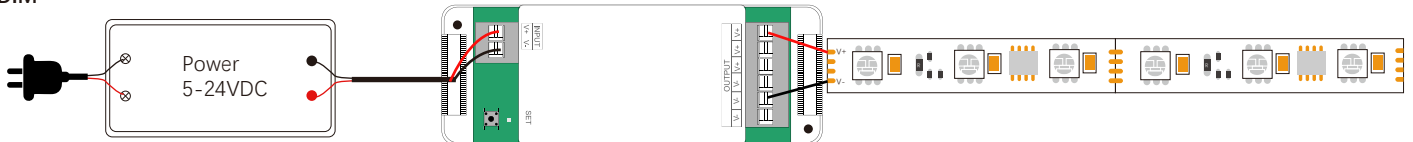


Wiring diagram of the device

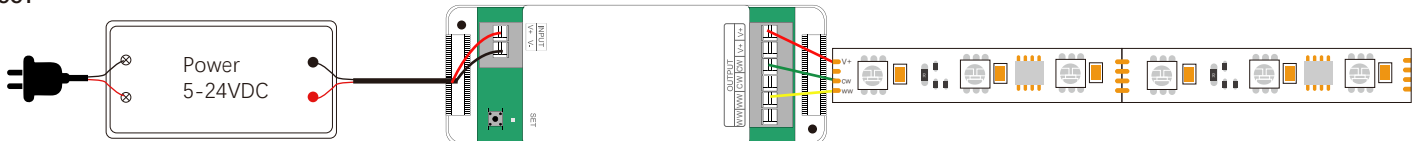
Connect the strip light

AC100-240V

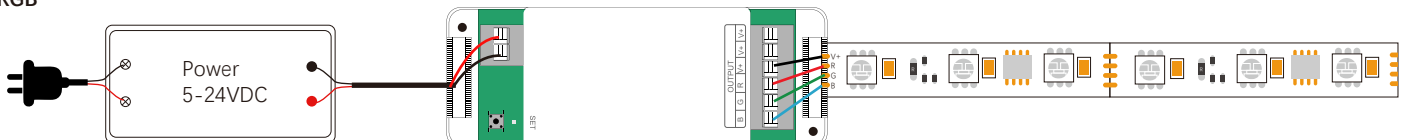
DIM



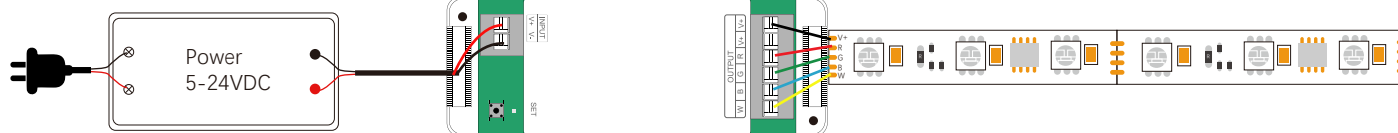
CCT



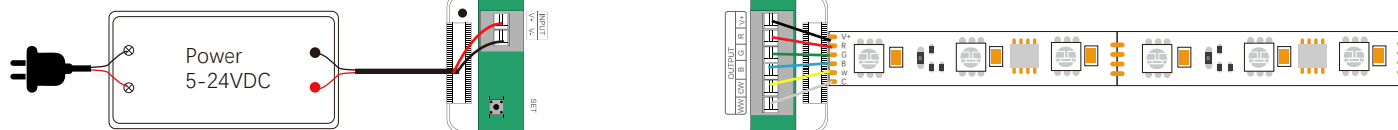
RGB



RGBW

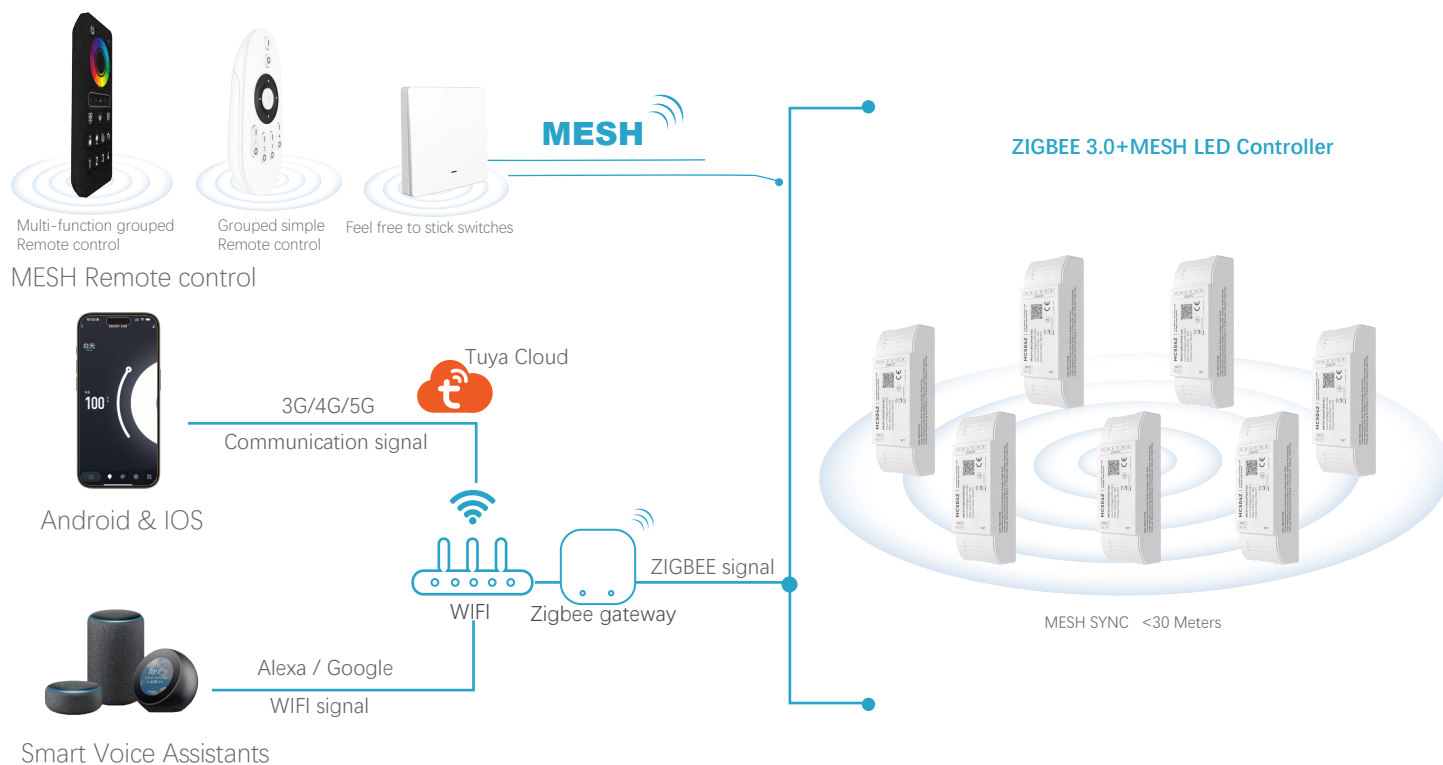


RGBCCT



Schematic diagram of the control connection

MESH wireless communication technology



Tuya smart download & APP network connection

1. Download and install the [Smart Life] or [Tuya Smart] APP

Search for [Tuya Smart] on Apple or Google Play or scan the QR code below to download and install the app. Please click on the "Sign Up" button to create an account and use it for the first time, if you already have an account, log in directly.

Please download the corresponding Tuya/Smart Life APP according to your region.



Scan the QR code to download the APP



Smart Life APP



Tuya Smart APP

2. Product function description & reset the device



Control Method 1: 'SET' Button	Control Method 2: Power Off	Indicator light status	Next steps	Functional Result
Short press (release within 1 second)	Not supported	No special flicker	No additional action required	Switch device power on/off status
Press and hold for 3 seconds, then release	3 times	Rapid flicker	Press any group button on the remote control	Complete the pairing of the remote control with the corresponding group
Press and hold for 5 seconds, then release.	5 times	Slow blinking	Operate network settings on the mobile app	Complete the device network configuration and connect to the mobile app
Press and hold for 10 seconds, then release.	10 times	Rapid flicker	No additional action required	Device reset, clear WiFi network information and remote control pairing

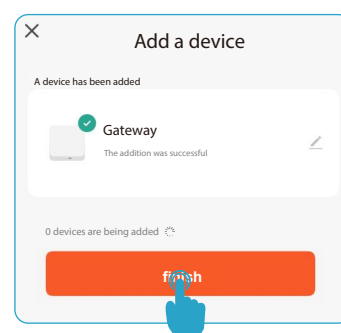
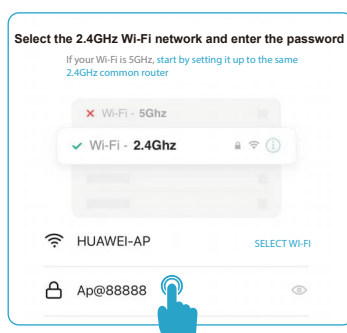
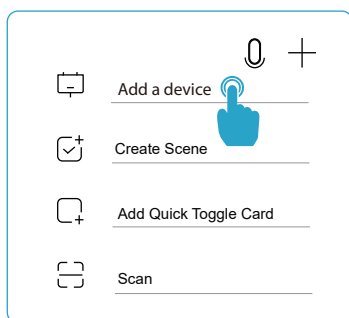
2.2-1. Adjust the controller frequency

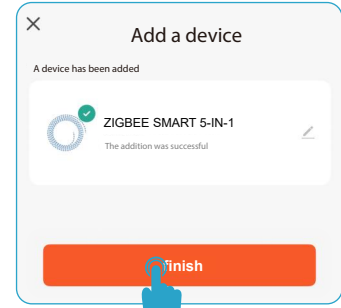
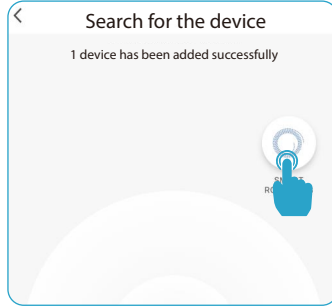
- Press and hold the "SET" button of the controller, let go after the indicator light flashes quickly, and wait for the indicator light to stop flashing. This stage is the preparation stage for frequency switching
- The indicator light stops flashing, and immediately press and hold the "SET" button again (enter the frequency selection stage):
 - When the indicator light turns to flicker slowly, let go immediately and the controller frequency is switched to 1kHz;
 - If the indicator light flashes quickly, let go immediately, and the controller frequency is 16kHz.

3. Connect to your smartphone

1. Make sure your smartphone is working under a WLAN network.
2. Open the Tuya APP, select Manually Add Gateway Central Control, select Zigbee Gateway, and enter the WIFI password to connect (Incorrect WIFI password will cause the connection to fail, non-2.4G network WIFI also.) will cause the connection to fail)
3. Reset the Zigbee gateway device, the red and blue lights of the Zigbee gateway are always on, turn on the power supply, please confirm that the red light is flashing, the blue light is always on, and the red light is always on after the connection is successful.
4. Click Done to enter the gateway control interface, add sub-devices, and confirm that the sub-devices belong to the network configuration mode (please place the gateway, controller, and smartphone close to each other for quick speed.) Pairing identification) long press the controller "SET" for 5 seconds, after the connection is successful, the sub-device will be displayed on the home page, then tap the device and enter the control interface to do more.
5. After the controller is installed in the APP, we can easily control the LED lighting with the APP.

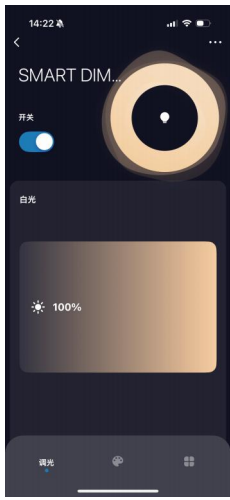
Follow these steps to complete the connection:





Tuya APP interface

Main interface: white light mode; color temperature mode; IPL mode; Color light mode+ White light mode; Color light mode+ color temperature mode;



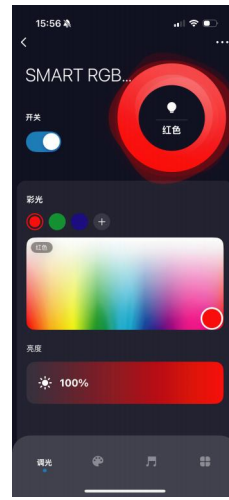
white light mode
DIM



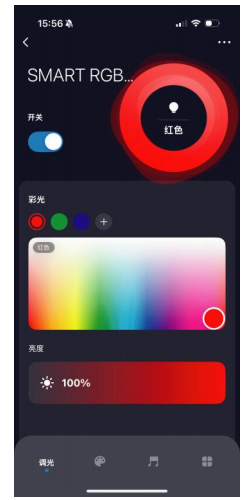
color temperature mode
CCT



IPL mode
RGB

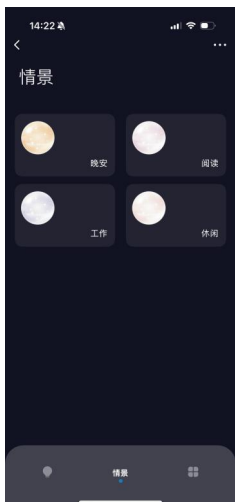


Color light mode+
White light mode
RGBW

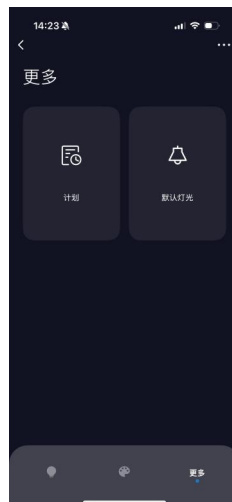


Color light mode+
color temperature mode;
RGB CCT

MC501 and MC502 Tuya app interface



Scenario mode



More pages



Settings page

Scenario mode: Four scenario modes to choose from.

More page: Schedule: Customize the countdown time to perform the on/off light action, and the light will automatically turn off when the countdown ends.

Default Light: Select the default light state to be turned on from the power supply each time; DIY lighting available.

Settings page: This interface can be bound with third-party language control, one-click execution and automation, group creation, device sharing and other functions.

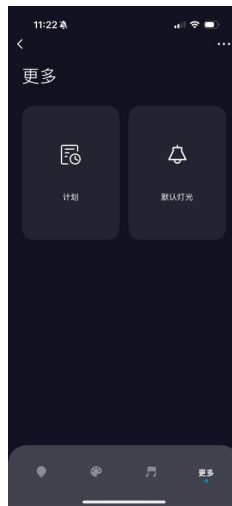
MC503、MC504、MC505 Tuya app interface



Scenario mode



Music mode



More pages



Settings page

Scenario mode: Eight scenario modes to choose from

Music mode: Local music: The device microphone collects music, and the lights move with it. There are five preset rhythms with adjustable sensitivity. Three custom modes to edit the rhythm, and two types of movements can be edited Effects, jumps and classics, edit color and sensitivity.

APP music: The mobile phone collects the microphone, and the lights rhythm with it. There are five preset grooves. Three custom modes to edit grooves, you can edit two animations, jumping and breathing, Edit color, sensitivity, decibel and pitch rhythm modes, adjustable min/max decibel-0-100db

More page: Schedule: Customize the countdown time to perform the on/off light action, and the light will automatically turn off when the countdown ends.

Default Light: Select the default light state to be turned on from the power supply each time; DIY lighting available.

Settings page: This interface can be bound with third-party language control, one-click execution and automation, group creation, device sharing and other functions.

Description of the function of the remote control

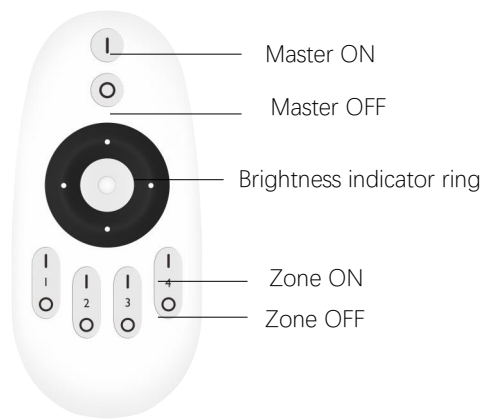
Multi-function grouped Remote control

Main ON/OFF button **1 2 3 4** Grouping key Short press; Select the key function. Long press; Perform key functions.

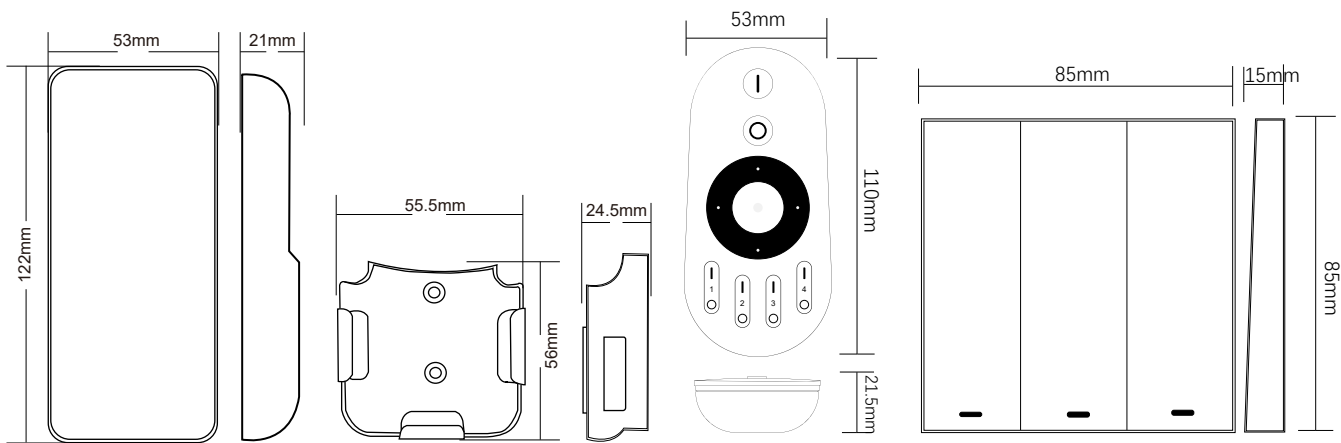




Grouped simple Remote control



Feel free to stick switches



Safety Precautions

1. The remote control is a precision electronic product, please do not use it in a humid or high temperature environment for a long time. If not in use for a long time, remove the battery and store it in a cool, dry place.
2. Do not use this device in a large area of metal or in an environment with strong electromagnetic waves nearby, otherwise it will seriously affect the control distance
3. Please check whether the input voltage of the constant voltage power supply meets the requirements of the controller, and check whether the connection of the cathode and anode is correct.
4. The working voltage is DC 5~24V, if the voltage is higher than 24V, the controller will be damaged.
5. Non-professional users cannot directly disassemble the controller, otherwise it may cause fire and electric shock.
6. The working temperature (Ta) is -20~60°C; Do not use the device in direct sunlight, humidity, or other high-temperature areas.
7. When the equipment load reaches 15A, the wire diameter must be more than 1.5 square millimeters
8. When the device load exceeds 10A, the connection cable from the DC port to the LED strip must be shorter than 40cm.
9. Please install the device in a good heat dissipation area.